



**SANTA MARIA PUBLIC AIRPORT DISTRICT
BOARD OF DIRECTORS**

**Thursday
February 27, 2020**

**Administration Building
Airport Boardroom
7:00 P.M.**

**REGULAR MEETING
A G E N D A**

This agenda is prepared and posted pursuant to the requirements of the California Government Code Section 54954.2. By listing a topic on this agenda, the Santa Maria Public Airport District has expressed its intent to discuss and act on each item. The Santa Maria Public Airport District welcomes orderly participation at its meetings from all members of the public. This includes assistance under the Americans with Disabilities Act to provide an equally effective opportunity for individuals with a disability to participate in and benefit from District activities. To request assistance with disability accommodation, please call (805) 922-1726. Notification at least 48 hours prior to the meeting would enable the Santa Maria Public Airport District to make reasonable arrangements to ensure accessibility to this meeting.

CALL TO ORDER

PLEDGE OF ALLEGIANCE

ROLL CALL: Adams, Brown, Rafferty, Engel, Baskett

1. MINUTES OF THE REGULAR MEETING HELD FEBRUARY 13, 2020.

2. COMMITTEE REPORT(S):

- a) AVIATION SUPPORT & PLANNING (Standing or Ad Hoc)
- b) ADMINISTRATION & FINANCIAL (Standing or Ad Hoc)
- c) MARKETING & PROMOTIONS (Standing or Ad Hoc)
- d) CITY & COUNTY LIAISON
- e) STATE & FEDERAL LIAISON
- f) VANDENBERG LIAISON
- g) BUSINESS PARK COMMITTEE (Ad Hoc)

3. GENERAL MANAGER'S REPORT

- a) Monthly Activity Report

4. MANAGER OF FINANCE & ADMINISTRATION REPORT

- a) Demand Register
- b) Budget to Actual
- c) Financial Statements

5. DISTRICT COUNSEL'S REPORT. (Joshua George and Natalie Frye Laacke)

6. **PUBLIC SESSION:** Statements from the floor will be heard during public session. Request to Speak forms are provided for those wishing to address the board. After completing the form, please give it to the Clerk. Requests requiring board action will be referred to staff and brought on the next appropriate agenda. Members of the public are cordially invited to speak on agenda items as they occur. Staff reports covering agenda items are available for review in the offices of the General Manager on the Tuesday prior to each meeting. The Board will establish time limit for receipt of testimony. The board reserves the right to establish further time limits for receipt of testimony.
7. The Consent Calendar is approved by **ROLL CALL VOTE** on one Motion. These items are read only on request of Board members.

The following items are presented for Board approval without discussion as a single agenda item in order to expedite the meeting. **SHOULD ANYONE WISH TO DISCUSS OR DISAPPROVE ANY ITEM**, it must be dropped from the blanket Motion of approval and be considered as a separate item.

It is the recommendation of staff that the Board receives, and file and/or approve the following leases and agreements or other routine items and authorize the President and Secretary to execute them:

- a) **AUTHORIZATON FOR THE GENERAL MANAGER TO EXECUTE A CONTRACT AND PROCEED WITH PFAS TESTING AS RECOMMENDED BY SCS ENGINEERS IN CONJUNCTION WITH THE SWRCB APPROVED WORK PLAN.**
- b) **AUTHORIZATION FOR THE PRESIDENT AND SECRETARY TO EXECUTE THE ELEVENTH AMENDMENT OF AGREEMENT BETWEEN THE DISTRICT AND RAUL MICHEL.**
- c) **AUTHORIZATION FOR THE PRESIDENT AND SECRETARY TO EXECUTE THE NINETEENTH AMENDMENT OF AGREEMENT BETWEEN THE DISTRICT AND CJJ FARMING.**
- d) **AUTHORIZATION FOR THE PRESIDENT AND SECRETARY TO EXECUTE THE THIRD AMENDMENT OF AGREEMENT BETWEEN THE DISTRICT AND GRESSER, INC.**
8. **PRESENTATION BY NAV MOSEY OF AIRSPACE SYSTEMS, INC REGARDING DRONE DETECTION SYSTEMS.**
9. **DISCUSSION AND DIRECTION TO STAFF REGARDING TERMINAL PARKING LOT OPERATION AND MONITORING.**
10. **NOMINATION FOR INDEPENDENT SPECIAL DISTRICT REPRESENTATIVE TO SANTA BARBARA LOCAL AGENCY FORMATION COMMISSION.**
11. **DISCUSSION AND DIRECTION TO STAFF REGARDING MEMBERSHIP AND GENERAL MANAGER PARTICIPATION ON THE BOARD FOR THE ECONOMIC ALLIANCE FOUNDATION OF NORTHERN SANTA BARBARA COUNTY.**

12. **CLOSED SESSION.** The Board will hold a Closed Session to discuss the following item(s):
 - a) **Conference with Real Property Negotiators (Chris Hastert, Tom Ross and District Counsel) Re: APN 111-231-11 (Gov. Code Section 54956.8)**
 - b) **Conference with Legal Counsel-Pending litigation pursuant to Government Code Section 54956.9(d)(4): 1 case SMPAD v. David Baskett.**
13. **DIRECTORS' COMMENTS.**
14. **ADJOURNMENT.**

MINUTES OF THE REGULAR BOARD
MEETING OF THE BOARD OF DIRECTORS
OF THE SANTA MARIA PUBLIC AIRPORT
DISTRICT HELD FEBRUARY 13, 2020

The Board of Directors of the Santa Maria Public Airport District held a Regular Meeting at the regular place at 7:00 p.m. Present were Directors Adams, Brown, Rafferty, Engel and Baskett. General Manager Hastert, Manager of Finance & Administration Reade and District Counsel Frye Laacke.

1. MINUTES OF THE REGULAR MEETING HELD January 23, 2020. Director Baskett made a Motion to approve the minutes of the regular meeting held January 23, 2020. Director Rafferty Seconded and it was carried by a 5-0 vote.
2. COMMITTEE REPORT(S):
 - a) AVIATION SUPPORT & PLANNING (Standing or Ad Hoc) – No meeting scheduled.
 - b) ADMINISTRATION & FINANCIAL (Standing or Ad Hoc) – No meeting scheduled.
 - c) MARKETING & PROMOTIONS (Standing or Ad Hoc) – No meeting scheduled.
 - d) CITY & COUNTY LIAISON – No meeting scheduled.
 - e) STATE & FEDERAL LIAISON – No meeting scheduled.
 - f) VANDENBERG LIAISON – No meeting scheduled.
 - g) BUSINESS PARK COMMITTEE (Ad Hoc) – The committee met; an item will be added to the agenda for further discussion.
3. GENERAL MANAGER'S REPORT. Mr. Hastert updated the board on the ATAC training jets that are currently using the airport and a Fare Study that was done for the upcoming service. He gave updates to meetings he has attended including the EDC, the General Plan, SWAAAE, CAC, APCD, 99ers, Social Media Archiving, Economic Forecasting, the Truck Center ground breaking, CEO Roundtable, Wildlife Hazard Working Group, Econ Alliance meet and greet and a representative from Salud Carbajal's office. He discussed an option he found for license plate recognition to control the parking lot. He also briefed the board on upcoming meetings. He plans to attend a meeting with the City regarding Airpark Drive, United Airlines for a site visit and the California Aviation and Aerospace day to be held in Sacramento, CA.
4. MANAGER OF FINANCE & ADMINISTRATION REPORT.

The Manager of Finance & Administration presented the Demand Register to the Board for review and approval.

- a) Demand Register. The Demand Register, covering warrants 067563 through 067645 in the amount of \$649,272.41 was recommended for approval as presented. Director Rafferty made a Motion to accept the Demand Register as presented. Director Baskett Seconded and it was carried by a 5-0 vote.

b) Investment Report. Received and filed.

5. DISTRICT COUNSEL'S REPORT. District Counsel Frye Laacke asked the Board to consider adding an item to the agenda under Government Code Section 54954.2(b)(2). Discussion and direction to staff regarding maintenance of airport parcels and excess fill dirt available to the airport. Director Engel made a Motion to add as agenda item 11a. Director Brown Seconded and it was carried by a 5-0 vote.

6. PUBLIC SESSION: Statements from the floor will be heard during public session. Request to Speak forms are provided for those wishing to address the board. After completing the form, please give it to the Clerk. Requests requiring board action will be referred to staff and brought on the next appropriate agenda. Members of the public are cordially invited to speak on agenda items as they occur. Staff reports covering agenda items are available for review in the offices of the General Manager on the Tuesday prior to each meeting. The Board has established a five-minute time limit for receipt of testimony. The board reserves the right to establish further time limits for receipt of testimony.

No one requested to speak.

7. The Consent Calendar is approved by ROLL CALL VOTE on one Motion. These items are read only on request of Board members.

The following items are presented for Board approval without discussion as a single agenda item in order to expedite the meeting. SHOULD ANYONE WISH TO DISCUSS OR DISAPPROVE ANY ITEM, it must be dropped from the blanket Motion of approval and be considered as a separate item.

It is the recommendation of staff that the Board receives, and file and/or approve the following leases and agreements or other routine items and authorize the President and Secretary to execute them:

- a) Authorization for the President and Secretary to execute the Second Amendment of Option and Agreement between the District and Santa Barbara Cellular Systems, LTD, a GA Limited Liability Partnership, DBA AT&T Wireless Services.
- b) Authorization for the General Manager to execute the Amendment of Agreement between the District and REACH.
- c) Authorization for two staff members to attend the 2020 Jumpstart Air Service Development Conference to be held June 1-3, 2020 in Reno, NV.

Director Rafferty made a Motion to approve Consent Calendar Items 7(a) through 7(c) as presented. Director Baskett Seconded and it was carried by a 5-0 vote. Directors Adams, Brown, Rafferty, Engel and Baskett voted "Yes".

8. Discussion and direction to staff regarding parking lot preparation and operation. John Smith, Principal Engineer with Tartaglia Engineering, presented phases of construction and estimated costs.

9. Presentation by Cherag Patel regarding Human Trafficking Signs and Prevention. Mr. Patel discussed the importance of the initiative and asked the airport to send staff to get certified in an upcoming seminar he is putting together.
10. Authorization for the General Manager to sign the Transportation Leaders against Human Trafficking Pledge. Director Baskett made a Motion, Director Brown Seconded and it was carried by a 5-0 vote.
11. Nomination for an Independent Special District Board Member from the Coastal Network to lead the direction of the CSDA by serving as a Director in Seat B or C for the remainder of the 2020-2022 term. Director Rafferty asked to be nominated by the Board for the position. Director Brown made a Motion to award the nomination to Director Rafferty. Director Engel Seconded and it was carried by a 5-0 vote.
- 11a. Discussion and direction to staff regarding maintenance of airport parcels and excess fill dirt available to the airport. Director Baskett made a Motion to authorize the General Manager to proceed, but not to exceed \$80,000. Director Rafferty Seconded and it was carried by a 5-0 vote.

RECESS: At 7:47 p.m.

Return to OPEN SESSION: At 8:00 p.m. The Board and staff reconvened to Open Session.

12. CLOSED SESSION. At 8:00 p.m. the Board went into Closed Session to discuss the following item(s):
 - a) Conference with Real Property Negotiators (Chris Hastert, Tom Ross and District Counsel) Re: APN 111-231-11 (Gov. Code Section 54956.8)

At 8:09 p.m., the Board and staff reconvened to Open Public Session.

There were no reportable actions.

13. DIRECTORS' COMMENTS: Directors Engel and Adams had no comment.

Director Rafferty thanked the Board for their support in the nomination.

Director Baskett asked for a Customs update.

Director Brown stated that the SWAAAE conference was interesting and he is concerned about the PFAS issue.

14. ADJOURNMENT. President Adams asked for a Motion to adjourn to a Regular Meeting to be held on February 27, 2020 at 7:00 p.m. at the regular meeting place. Director Rafferty made that Motion, Director Baskett Seconded and the Motion was carried by a 5-0 vote.

ORDER OF ADJOURNMENT

This Regular Meeting of the Board of Directors of the Santa Maria Public Airport District is hereby adjourned at 8:12 p.m. on February 13, 2020.

Chuck Adams, President

Hugh Rafferty, Secretary

Monthly Activity Report

January

Aviation Building Information



AGENDA ITEM

3a

2/27/2020

| | Inventory | Occupied | Available | Occupancy Rate |
|---|-----------|----------|-----------|----------------|
| T Hangars | 140 | 140 | 0 | 100% |
| Corporate T Hangars | 8 | 8 | 0 | 100% |
| Corporate Hangars | 28 | 28 | 0 | 100% |
| Storage Units | 26 | 26 | 0 | 100% |
| Owner Build | 23 | 23 | 0 | 100% |
| Commercial Aviation Hangar Space (SqFt) | 107,782 | 103,360 | 4,422 | 96% |
| Commercial Aviation Office Space (SqFt) | 28,800 | 19,449 | 9,351 | 68% |

Hangar Waiting List

| | |
|------------------------------|----|
| T-Hangars | 16 |
| Corporate/Corporate T-Hangar | 23 |

Monthly Activity

| | Jan-19 | Dec-19 | Jan-20 | %Change |
|---------------------------|--------|--------|--------|---------|
| Operations | 2,352 | 2,596 | 3,055 | 30% |
| Noise/Nuisance Complaints | 0 | 0 | 2 | |
| Jet\100LL Fuel (Gallons) | 31,724 | 56,386 | 71,612 | 126% |

Enplanments

| | Jan-19 | Dec-19 | Jan-20 | %Change |
|-----------------------|--------|--------|--------|---------|
| Allegiant | 1,813 | 2,113 | 1,726 | -5% |
| Central Coast Shuttle | 988 | 1,293 | 925 | -6% |

Airline Load Factor

| | # of Flights | Load Factor Actual flights | Load Factor SCHED flights |
|-----------|--------------|----------------------------------|------------------------------|
| Allegiant | 16 | 69% | 69% |

Land Lease Information (Acres)

| | Inventory | Occupied | Available |
|--------------------------|-----------|----------|-----------|
| Business Park | 224 | 0 | 224 |
| Agriculture | 592.29 | 592.29 | 0 |
| Grazing | 511 | 511 | 0 |
| Non Aviation Land Leases | TBD | 48.42 | |
| Aviation Land Leases | TBD | 12.22 | |
| Total Airport Acreage | 2,550 | | |

Mobile Home Park

| | Spaces Rented | Units Sold |
|------------------|---------------|------------|
| Mobile Home Park | 78 | |

2019-2020

**DEMAND REGISTER
SANTA MARIA PUBLIC AIRPORT DISTRICT**

Full consideration has been received by the Santa Maria Public Airport District for each demand, numbers 067646 to 067685, and electronic payments on Pacific Premier Bank and in the total amount of \$85,433.66.

CHRIS HASTERT
GENERAL MANAGER

DATE

The undersigned certifies that the attached register of audited demands of the Santa Maria Public Airport District for each demand, numbers 067646 to 067685, and electronic payments on Pacific Premier Bank in the total amount of \$85,433.66 has been approved as being in conformity with the budget approved by the Santa Maria Public Airport District and funds are available for their payment.

VERONEKA READE
MANAGER OF FINANCE AND ADMINISTRATION

DATE

THE BOARD OF DIRECTORS OF THE SANTA MARIA PUBLIC AIRPORT DISTRICT APPROVED PAYMENT OF THE ATTACHED WARRANTS AT THE MEETING OF FEBRUARY 27, 2020.

HUGH RAFFERTY
SECRETARY

Santa Maria Public Airport District

Demand Register

| Check Number | Check Date | Vendor Name | Check Amount | Description |
|--------------|------------|---|------------------|-------------------------------------|
| 067646 | 2/24/2020 | ACCO Engineered Systems | 2,370.00 | HVAC Maintenance |
| 067647 | 2/24/2020 | Advantage Answering Plus | 261.13 | Answering Service |
| 067648 | 2/24/2020 | Aflac | 374.70 | Voluntary Ins. - Employee |
| 067649 | 2/24/2020 | Archive Social | 2,388.00 | Computer Support Services |
| 067650 | 2/24/2020 | AT&T | 242.37 | Phone Service |
| 067651 | 2/24/2020 | Aviation Week & Space Technology | 59.00 | Subscription |
| 067652 | 2/24/2020 | Bagby Plumbing Service & Repair | 770.10 | Building Maint. - Fire Station |
| 067653 | 2/24/2020 | Blueglobes, Inc. | 260.16 | Lighting & Nav Aid Maint. |
| 067654 | 2/24/2020 | Bomar Security & Investigation | 961.00 | Security Service |
| 067655 | 2/24/2020 | Clark Pest Control | 3,891.00 | Pest Control - Terminal & Adm. |
| 067656 | 2/24/2020 | De Lage Landen | 102.18 | Lease/Maint. - Copier |
| 067657 | 2/24/2020 | Federal Express | 70.33 | Freight & Common Carrier |
| 067658 | 2/24/2020 | Frontier Communications | 852.98 | Telephone Service |
| 067659 | 2/24/2020 | Grainger | 103.87 | Building Maintenance Terminal |
| 067660 | 2/24/2020 | Home Depot | 291.90 | Building Maintenance |
| 067661 | 2/24/2020 | J B Dewar, Inc | 390.04 | Fuel Expense - Gas/Diesel |
| 067662 | 2/24/2020 | J.D. Humann Landscape Contr. | 394.75 | Landscape Maintenance |
| 067663 | 2/24/2020 | Letters, Inc. | 42.00 | Auto Maintenance |
| 067664 | 2/24/2020 | McMasters and Carr | 85.19 | Building Maint. - Terminal |
| 067665 | 2/24/2020 | Mead & Hunt, Inc. | 820.00 | Air Service Consulting |
| 067666 | 2/24/2020 | Mission Uniform Service | 289.00 | Uniform Service |
| 067667 | 2/24/2020 | Napa Auto Parts | 160.34 | Auto parts |
| 067668 | 2/24/2020 | National Business Aviation Assoc., Inc. | 457.50 | Membership Renewal |
| 067669 | 2/24/2020 | Carla Osborn | 385.52 | Unreimbursed Medical Payment (125K) |
| 067670 | 2/24/2020 | Pacific Telemanagement Services | 227.92 | Pay Phone Service |
| 067671 | 2/24/2020 | Pathpoint | 1,830.87 | Airport Maintenance Service |
| 067672 | 2/24/2020 | Principal Financial Group | 2,830.11 | Dental, Life, Disability, & Vision |
| 067673 | 2/24/2020 | Veroneka Reade | 10.04 | Unreimbursed Medical Payment (125K) |
| 067674 | 2/24/2020 | SB County Air Pollution | 1,377.93 | Permits |
| 067675 | 2/24/2020 | SCS Engineers | 2,533.00 | Workplan for Assessment of PFAS |
| 067676 | 2/24/2020 | S Lombardi & Assoc., Inc. | 6,315.00 | Airport Advertising |
| 067677 | 2/24/2020 | Smith's Alarms & Electronics Inc. | 630.00 | Fire Alarm Service |
| 067678 | 2/24/2020 | Sousa Tire Service, LLC | 875.96 | Vehicle Tires |
| 067679 | 2/24/2020 | South Coast Emergency Vehicle Services | 1,632.26 | ARFF Vehicle Maintenance |
| 067680 | 2/24/2020 | Tri-Counties Plant Service | 275.00 | Interior Plants Maint. |
| 067681 | 2/24/2020 | WageWorks | 100.00 | Cafeteria Plan - Admin. Fee |
| 067682 | 2/24/2020 | West Coast Industrial Supply | 195.86 | Auto Maintenance |
| 067683 | 2/24/2020 | Zee Medical Service Company | 123.17 | First Aid |
| 067684 | 2/24/2020 | Zoom Imaging Solutions, Inc. | 31.23 | Lease/Maint.- Copier Machine |
| 067685 | 2/24/2020 | Mahoney Leasing LLC | 10,913.50 | |
| | | Subtotal | <u>45,924.91</u> | |

| | | |
|--|-------------------------|-----------------------------|
| 2/13/2020 Pacific Gas & Electric Company | 32.96 | Terminal/Admin./Main Hangar |
| 2/13/2020 Pacific Gas & Electric Company | 24.64 | Terminal/Admin./Main Hangar |
| 2/13/2020 Pacific Gas & Electric Company | 459.31 | Terminal/Admin./Main Hangar |
| 2/13/2020 Pacific Gas & Electric Company | 220.01 | Terminal/Admin./Main Hangar |
| 2/18/2020 CALPERS | 4,794.62 | Retirement |
| 2/20/2020 Paychex | 24,997.25 | Payroll |
| 2/21/2020 Paychex | 5,151.00 | Payroll Taxes |
| 2/24/2020 Mass Mutual | 3,828.96 | Employee Paid Retirement |
| Subtotal | <u>39,508.75</u> | |
| Total | <u><u>85,433.66</u></u> | |

Santa Maria Public Airport District

Budget Report

YTD Expense January 31, 2020

| Account Number | Account Description | Actual Expenses | Budgeted Expenses | Over/(Under) Budget |
|----------------|--------------------------------------|-----------------|-------------------|---------------------|
| 71110-100 | Electricity - Landing Area | 21,333 | 11,252 | 10,081 |
| 71110-455 | Electricity - Hotel Ramp | 778 | 694 | 85 |
| 71120-150 | ARFF Services | 188,445 | 439,705 | (251,260) |
| 71220-100 | Signs | 1,032 | 933 | 98 |
| 71310-100 | Lighting & Nav Aid Maintenance | 11,793 | 6,490 | 5,303 |
| 71323-100 | Runway Generator Maintenance | 978 | 2,310 | (1,332) |
| 71330-100 | Pavement - Runways & Taxiways | 111 | 4,783 | (4,672) |
| 71331-100 | Pavement - Ramps & Tiedowns | 65 | 6,329 | (6,264) |
| 71345-100 | Weed/Wildlife Abatement | 25,572 | 27,341 | (1,769) |
| 71350-100 | Fencing & Gates | | 2,508 | (2,508) |
| 72100-200 | Electricity - Hangars | 100 | | 100 |
| 72110-200 | Electricity - Hangars | 13,150 | 12,360 | 791 |
| 72130-200 | Water/Sewer - Hangar | 1,121 | 2,222 | (1,101) |
| 72150-200 | Emergency Phones - Hangars | 1,234 | 957 | 277 |
| 72260-200 | Landscaping Hangar Area | 3,523 | 4,033 | (511) |
| 72290-200 | Miscellaneous Hangar Supplies | | 817 | (817) |
| 72300-200 | Building Maintenance - Hangar Area | 2,975 | 11,025 | (8,050) |
| 72310-200 | Lighting Maintenance - Hangars | 468 | 4,083 | (3,615) |
| 72311-200 | Janitorial Sv Hangar Area | 8,085 | 8,206 | (121) |
| 72328-200 | Fire Extinguisher Service - Hangar | | 875 | (875) |
| 72331-200 | Pavement - Ramp - Hangars | | 6,563 | (6,563) |
| 72350-200 | Fencing & Gates | 881 | 1,779 | (898) |
| 72445-200 | Fire Alarm Service - Hangars | 2,688 | 1,902 | 786 |
| 72480-200 | Waste Oil Removal - Hangars | 522 | 1,021 | (499) |
| 73700-721 | Owner Build - Water/Sewer | 357 | 512 | (155) |
| 73700-722 | Owner Build - Electricity | 102 | 126 | (23) |
| 73700-723 | Owner Build - Restroom Janitorial | 1,470 | 1,492 | (22) |
| 73700-724 | Owner Build - Maintenance | | 583 | (583) |
| 74110-203 | Electricity - Main Hangar | 20,167 | 19,614 | 553 |
| 74110-204 | Utilities - 3940 Mitchell Rd. | 135 | 163 | (28) |
| 74120-203 | Gas- Main Hangar | 899 | 780 | 119 |
| 74130-125 | Water/Refuse - Paint Hangar | 2,023 | 2,830 | (806) |
| 74130-203 | Water/Refuse - Main Hangar | 2,267 | 3,697 | (1,431) |
| 74150-125 | Emergency Phone Lines - Paint Hangar | 1,126 | 1,240 | (114) |
| 74150-203 | Emergency Phone Lines - Main Hangar | 420 | 346 | 74 |
| 74260-400 | Landscaping - FBO | 2,138 | 650 | 1,488 |
| 74300-400 | Building Maintenance - FBO | 3,178 | 7,729 | (4,552) |
| 74311-203 | Janitorial Sv Main Hangar & FBOs | 1,470 | 1,492 | (22) |
| 74311-218 | FBO- Water/Refuse/Sewer | 831 | 1,825 | (994) |
| 74315-400 | Fire Sprinkler Maintenance | | 1,458 | (1,458) |
| 74331-400 | Pavement - Ramps & Tiedowns | 114 | 1,167 | (1,053) |
| 74340-400 | Drainage Maintenance | 91 | 875 | (784) |
| 74350-400 | Fencing & Gates | 10,573 | 13,300 | (2,727) |
| 74445-125 | Fire Alarm Service - Paint Hangar | 705 | 245 | 460 |
| 74445-203 | Fire Alarm Service - Main Hangar | 705 | 245 | 460 |
| 75110-249 | Electricity - Terminal | 54,587 | 60,115 | (5,528) |

Santa Maria Public Airport District

Budget Report

YTD Expense January 31, 2020

| Account Number | Account Description | Actual Expenses | Budgeted Expenses | Over/(Under) Budget |
|----------------|--------------------------------------|-----------------|-------------------|---------------------|
| 75120-249 | Gas - Terminal | 2,516 | 1,826 | 690 |
| 75130-249 | Water/Refuse/Sewer - Terminal | 7,336 | 11,960 | (4,624) |
| 75150-249 | Emergency Phone Lines - Terminal | 4,649 | 3,858 | 790 |
| 75150-250 | Pay Phone Service - Terminal | 1,595 | 1,595 | - |
| 75150-300 | Audio & Video Monthly Charges | 2,247 | 1,999 | 247 |
| 75220-250 | Signs | 783 | 1,167 | (384) |
| 75255-250 | Janitorial Sv Terminal Area | 55,832 | 53,827 | 2,005 |
| 75260-250 | Landscaping - Terminal | 15,461 | 17,702 | (2,240) |
| 75300-249 | Building Maint. - Terminal | 9,631 | 20,825 | (11,194) |
| 75300-339 | Building Maintenance - Fire Station | 793 | 3,343 | (2,549) |
| 75310-240 | Lighting Maintenance - Streets | 68 | 583 | (515) |
| 75310-249 | Lighting Maintenance - Terminal | 1,077 | 2,333 | (1,257) |
| 75310-339 | Lighting Maintenance - Fire Station | | 58 | (58) |
| 75323-249 | Generator Maintenance - Terminal | 895 | 1,167 | (271) |
| 75323-339 | Generator Maintenance - Fire Station | 798 | 875 | (77) |
| 75333-250 | Pavement - Roads - Terminal Area | 8,242 | 5,833 | 2,408 |
| 75350-250 | Fencing & Gates - Terminal | 428 | 1,167 | (739) |
| 75465-249 | Automatic Door Maintenance | 1,092 | 3,500 | (2,408) |
| 75475-249 | Interior Plant Service - Terminal | 1,925 | 1,925 | - |
| 75700-740 | Terminal Accessories | 3,392 | 7,793 | (4,401) |
| 75700-761 | Fire Fighting Equipment | | 6,854 | (6,854) |
| 76110-300 | Electric - Street Lights | 1,128 | 1,176 | (48) |
| 76110-310 | Electric - Retention Dam Pumps | 1,297 | 2,242 | (945) |
| 76140-300 | Recycled Water | | 1,313 | (1,313) |
| 76220-250 | Signs | | 583 | (583) |
| 76260-300 | Landscaping - RGL | 5,070 | 5,805 | (735) |
| 76290-300 | South Well Repairs | | 292 | (292) |
| 76310-300 | Street Light Maintenance | | 292 | (292) |
| 76340-300 | Drainage Maintenance | 1,402 | 3,500 | (2,098) |
| 76345-300 | North Well Repairs | | 875 | (875) |
| 76350-300 | Fencing & Gates | | 1,458 | (1,458) |
| 76360-300 | Stormwater Retention Facilities | 5,461 | 1,983 | 3,478 |
| 76700-750 | MHP - Salaries | 55,029 | 54,154 | 875 |
| 76700-752 | MHP - Maintenance | 14,028 | 17,961 | (3,933) |
| 76700-753 | MHP - MHP Liability Insurance | 6,854 | 3,369 | 3,486 |
| 76700-754 | MHP - Utilities | 99,684 | 93,088 | 6,596 |
| 76700-755 | MHP - Property Management | 16,450 | 16,450 | - |
| 76700-757 | MHP - General and Admin. Expense | 13,780 | 9,278 | 4,502 |
| 87010-451 | General Manager | 93,657 | 93,353 | 304 |
| 87010-452 | Manager of Ops & Maintenance | 55,399 | 58,017 | (2,618) |
| 87010-453 | Manager of Finance& Admin | 50,838 | 55,255 | (4,416) |
| 87010-454 | Operations Officer | 27,598 | 33,138 | (5,540) |
| 87010-455 | Administrative Assistant | 33,518 | 35,509 | (1,991) |
| 87010-456 | Maintenance Foreman | 42,917 | 44,025 | (1,108) |
| 87010-457 | Maintenance Workers III | 40,875 | 68,497 | (27,622) |
| 87010-458 | Maintenance Worker I | 46,381 | 43,810 | 2,571 |

Santa Maria Public Airport District

Budget Report

YTD Expense January 31, 2020

| Account Number | Account Description | Actual Expenses | Budgeted Expenses | Over/(Under) Budget |
|----------------|---|-----------------|-------------------|---------------------|
| 87010-460 | Accounting Clerk | 39,192 | 54,330 | (15,138) |
| 87010-462 | Receptionist | 18,360 | 24,849 | (6,489) |
| 87020-473 | Longevity Pay | 15,745 | 17,409 | (1,664) |
| 87030-481 | Medicare Tax | 7,787 | 7,726 | 60 |
| 87030-482 | Medical Insurance | 134,217 | 149,759 | (15,542) |
| 87030-483 | Dental Insurance | 7,615 | 6,791 | 824 |
| 87030-484 | Auto Allowance | 7,731 | 8,050 | (319) |
| 87030-485 | Life Insurance | 2,331 | 2,493 | (162) |
| 87030-486 | Disability Insurance | 3,787 | 4,293 | (506) |
| 87030-487 | PERS Retirement | 184,627 | 136,502 | 48,125 |
| 87030-488 | Worker's Compensation | 9,562 | 12,349 | (2,787) |
| 87030-489 | Employee Vision Coverage | 965 | 890 | 75 |
| 87110-150 | Electricity - Shop | 1,718 | 2,093 | (375) |
| 87110-217 | Electricity - Administration Building | 7,920 | 7,044 | 876 |
| 87120-150 | Gas - Shop | 149 | 149 | (0) |
| 87120-217 | Gas - Administration Building | 415 | 116 | 299 |
| 87130-150 | Water/Refuse - Shop | 1,403 | 2,605 | (1,202) |
| 87130-217 | Water/Sewer - Administrative Building | 591 | 1,069 | (479) |
| 87130-500 | Water - Landscaping | 12,463 | 19,284 | (6,821) |
| 87140-500 | Trash - Paper Recycling | 530 | 858 | (328) |
| 87160-501 | Cellular Phone | 7,102 | 8,604 | (1,502) |
| 87160-502 | Security Phone Lines | 706 | 621 | 85 |
| 87160-504 | Administration Office - Monthly Service | 3,602 | 3,432 | 170 |
| 87160-505 | Administration Office - Toll Calls | 891 | 1,121 | (229) |
| 87160-507 | Administration Office - Fax Line | 895 | 846 | 48 |
| 87160-509 | Tower & Fire Station | 1,677 | 1,828 | (151) |
| 87160-510 | Shop Phone | 1,479 | 1,390 | 89 |
| 87160-511 | Answering Service | 2,169 | 1,945 | 224 |
| 87210-500 | Security Supplies | | 1,983 | (1,983) |
| 87230-500 | Janitorial Supplies | 6,573 | 5,402 | 1,171 |
| 87240-500 | Small Tools | 4,349 | 5,275 | (926) |
| 87260-150 | Shop Supplies | 1,449 | 2,654 | (1,205) |
| 87270-531 | Fuel Expense - Gas/Oil | 6,295 | 5,828 | 468 |
| 87270-532 | Fuel Expense - Diesel Fuel/Oil | 8,756 | 7,869 | 886 |
| 87275-500 | Solvent | 347 | 1,122 | (774) |
| 87280-546 | First Aid | 671 | 326 | 345 |
| 87280-547 | Safety Equipment | 3,030 | 2,129 | 900 |
| 87280-548 | Training Supplies | | 350 | (350) |
| 87286-500 | Uniform Service | 4,751 | 4,517 | 234 |
| 87290-500 | Sundries | 2,558 | 2,603 | (46) |
| 87300-150 | Building Maintenance - Shop | 2,869 | 2,129 | 740 |
| 87300-217 | Building Maintenance - Admin | 3,077 | 4,620 | (1,543) |
| 87321-150 | Equipment Maintenance - Shop | 9 | 438 | (428) |
| 87322-500 | Radio Maintenance | | 1,781 | (1,781) |
| 87324-521 | Copier | 4,413 | 4,718 | (305) |
| 87324-523 | Maintenance - Postage Machine | 1,089 | 842 | 246 |

Santa Maria Public Airport District

Budget Report

YTD Expense January 31, 2020

| Account Number | Account Description | Actual Expenses | Budgeted Expenses | Over/(Under) Budget |
|----------------|---|-----------------|-------------------|---------------------|
| 87328-500 | Fire Extinguisher Service | | 1,779 | (1,779) |
| 87360-536 | Automotive Maintenance - Mechanical | 2,232 | 4,667 | (2,434) |
| 87360-537 | Automotive Maintenance - Tires | 2,267 | 2,333 | (67) |
| 87370-541 | Heavy Equip Maint - Mechanical | 5,935 | 9,625 | (3,690) |
| 87370-542 | Heavy Equip Maint - Tires | 957 | 5,833 | (4,876) |
| 87370-543 | ARFF Vehicle Maintenance | 3,020 | 12,250 | (9,230) |
| 87380-554 | Fuel System - Fire Alarm Service | 210 | 583 | (373) |
| 87400-500 | Directors Fees | 7,100 | 12,250 | (5,150) |
| 87412-500 | Payroll Processing Fees | 3,936 | 3,272 | 664 |
| 87414-500 | Annual Audit | 19,791 | 17,085 | 2,706 |
| 87420-500 | Legal Counsel Services | 31,672 | 44,565 | (12,893) |
| 87422-500 | Legal Services Contingencies | 89 | | 89 |
| 87440-500 | Security Service | 128,555 | 229,361 | (100,807) |
| 87443-500 | Security Sys Maint & Repairs | 5,975 | 4,083 | 1,892 |
| 87450-500 | Janitorial Service - Admin | 6,615 | 6,714 | (99) |
| 87470-500 | Landscaping Services | 2,290 | 2,622 | (332) |
| 87472-500 | Landscaping Contingencies | 2,067 | 2,917 | (850) |
| 87475-500 | Internet/Web Page Maintenance | 12,183 | 10,977 | 1,206 |
| 87510-562 | Bank Charges - Service Charges | 8,411 | 7,765 | 646 |
| 87520-566 | Freight & Common Carrier | 400 | 433 | (33) |
| 87520-567 | Postage | 600 | 933 | (333) |
| 87520-568 | Printing & Stationery | 101 | 602 | (501) |
| 87520-570 | Misc Office Supplies | 4,061 | 8,792 | (4,730) |
| 87520-572 | Books & Publications | 926 | 1,051 | (125) |
| 87530-581 | Computer Supplies | 7,341 | 10,669 | (3,328) |
| 87530-583 | Computer Support Services | 71,444 | 59,074 | 12,370 |
| 87540-600 | Dues and Memberships | 2,318 | 2,869 | (551) |
| 87540-601 | Dues -AAAE | 3,700 | 2,917 | 783 |
| 87540-603 | Dues - SWAAAE | 285 | 333 | (48) |
| 87540-605 | Dues - Chamber of Commerce | 8,050 | 4,667 | 3,383 |
| 87540-606 | Dues - National Notary Association | | 88 | (88) |
| 87540-607 | Dues - CA Special Districts Association | 7,302 | 3,950 | 3,352 |
| 87540-608 | Dues - AA AE ARDF CA Airport Storm | | 2,888 | (2,888) |
| 87540-610 | Costco Membership | 180 | 96 | 84 |
| 87540-618 | Santa Maria Times | | 88 | (88) |
| 87540-628 | Pro-rata Share of LAFCO Budget | 2,869 | 1,674 | 1,195 |
| 87600-596 | Advertising - Legal | 440 | 1,750 | (1,310) |
| 87600-597 | Advertising - General | 250 | | 250 |
| 87600-599 | Advertising - Airport Advertising | 36,601 | 32,958 | 3,643 |
| 87610-100 | Depreciation - Landing Area | 621,377 | 777,169 | (155,792) |
| 87610-200 | Depreciation - Hangar Area | 68,666 | 84,552 | (15,886) |
| 87610-250 | Depreciation - Terminal Area | 182,861 | 207,969 | (25,108) |
| 87610-300 | Depreciation - RGL | 123,270 | 138,013 | (14,743) |
| 87610-400 | Depreciation - Main Hangar & FBO | 26,802 | 31,270 | (4,468) |
| 87610-500 | Depreciation - Administration | 93,366 | 104,683 | (11,317) |
| 87620-692 | Emergency Exercises | | 292 | (292) |

Santa Maria Public Airport District

Budget Report

YTD Expense January 31, 2020

| Account Number | Account Description | Actual Expenses | Budgeted Expenses | Over/(Under) Budget |
|----------------|---------------------------------------|-----------------|-------------------|---------------------|
| 87630-591 | Insurance - Airport Liability | 7,554 | 8,687 | (1,133) |
| 87630-592 | Insurance - Auto, Fire, Property | 47,725 | 54,349 | (6,623) |
| 87630-595 | Insurance - General Liability | 18,904 | 22,055 | (3,151) |
| 87650-641 | Taxes - Sales | 80 | | 80 |
| 87650-643 | Permits | 1,946 | 2,859 | (913) |
| 87650-646 | Storm Water Permits | 4,950 | 1,124 | 3,827 |
| 87660-500 | Education | 3,900 | 9,333 | (5,434) |
| 87670-500 | Business Travel & Entertainment | 36,421 | 42,165 | (5,744) |
| 87679-500 | Employee Recognition | 1,624 | 2,217 | (592) |
| 87700-791 | Sig Items - Training Live Burn | | 14,000 | (14,000) |
| 88680-681 | SM Chamber Economic Development | 36,300 | 21,175 | 15,125 |
| 88680-685 | Airshow Expense | | 198,095 | (198,095) |
| 88680-691 | Planning & Marketing | 5,234 | 20,417 | (15,183) |
| 88680-692 | Consulting Services - Aviation | 43,278 | 45,783 | (2,505) |
| 88680-693 | Consulting Services - Contingencies | 51,152 | 80,369 | (29,217) |
| 88680-702 | Rent Credit - Operations | 3,095 | 5,833 | (2,738) |
| 88700-701 | Airfest Expense - Nonprofit Donations | 250.00 | | 250 |
| 88700-702 | Airfest Expenses- Gala/VIP Tent | 87,360 | | 87,360 |
| 88700-703 | Airfest Expenses- Performers | 174,682 | | 174,682 |
| 88700-704 | Airfest Expenses- Insurance | 6,484 | | 6,484 |
| 88700-705 | Airfest Expenses- Miscellaneous | 8,233 | | 8,233 |
| 88700-706 | Airfest Expenses- Advertising | 100,522 | | 100,522 |
| 88700-707 | Airfest Expenses- Rental Cars | 6,557 | | 6,557 |
| 88700-708 | Airfest Expenses- Lodging | 63,448 | | 63,448 |
| 88700-709 | Airfest Expenses- Safety & Security | 78,006 | | 78,006 |
| | Total | 3,938,423 | 4,394,238 | (455,815) |

Santa Maria Public Airport District
Statement of Net Position
For the Year to Date January 31, 2020

Current assets:

| | |
|--|-----------|
| Cash and cash equivalents | 2,384,028 |
| Restricted - cash and cash equivalents | 5,073,255 |
| Certificate-of-deposit | 8,000 |
| Accounts receivable - customers and tenants, net | 65,036 |
| Prepaid expenses and deposits | 86,186 |

| | |
|-----------------------------|------------------|
| Total current assets | 7,616,506 |
|-----------------------------|------------------|

Non-current assets:

| | |
|--|------------|
| Note receivable | 140,579 |
| Capital assets, not being depreciated | 10,208,729 |
| Depreciable capital assets | 21,777,297 |
| Deferred other post-employment benefits outflows | 6,434 |
| Deferred pension outflows | 392,595 |

| | |
|--------------------------|-------------------|
| Total non-current assets | 32,525,634 |
|--------------------------|-------------------|

| | |
|---------------------|-------------------|
| Total assets | 40,142,141 |
|---------------------|-------------------|

Current liabilities:

| | |
|--|---------|
| Accounts payable and accrued expenses | 283,193 |
| Accrued wages and related payables | (6,870) |
| Unearned Revenue (customer prepaid) | 126,047 |
| Hangar and other deposits | 115,892 |
| Long-term liabilities - due in one year: | |
| Compensated absences | 23,562 |
| Land improvements payable | 3,169 |

| | |
|---------------------------|----------------|
| Total current liabilities | 544,994 |
|---------------------------|----------------|

Long-term liabilities - due in more than one year

| | |
|--|-----------|
| Compensated absences | 70,687 |
| Land improvements payable | 3,729 |
| Total other post-employment benefits liability | 263,160 |
| Net pension liability | 1,729,838 |
| Deferred pension inflows | 97,872 |

| | |
|-----------------------------|------------------|
| Total long term liabilities | 2,165,286 |
|-----------------------------|------------------|

| | |
|--------------------------|------------------|
| Total liabilities | 2,710,280 |
|--------------------------|------------------|

Net position:

| | |
|------------------------|------------|
| Retained Earnings | 37,116,091 |
| Change in Net Position | 315,769 |

| | |
|---------------------------|-------------------|
| Total net position | 37,431,860 |
|---------------------------|-------------------|

| | |
|---|-------------------|
| Total liabilities and net position | 40,142,141 |
|---|-------------------|

**SANTA MARIA PUBLIC AIRPORT DISTRICT
PROFIT AND LOSS STATEMENT
YEAR TO DATE JANUARY 31, 2010**

| | Year to Date | Monthly Average | Month Ending 01/31/20 | Percentage of Average |
|---|-----------------|--------------------|--------------------------|--------------------------|
| Revenues from Operations: | | | | |
| Landing area | | | | |
| Landing fees and tiedowns | 42,442 | 6,063 | 4,649 | 77% |
| Fuel flowage fees | 33,760 | 4,823 | 4,297 | 89% |
| Subtotal | 76,202 | 10,886 | 8,946 | 82% |
| Hangar area | | | | |
| T- Hangar | 218,714 | 31,245 | 31,666 | 101% |
| Corporate T-Hangars | 148,533 | 21,219 | 21,248 | 100% |
| T-Hangar Storage Units | 16,772 | 2,396 | 2,396 | 100% |
| Owner Build Hangars | 11,543 | 1,649 | 1,649 | 100% |
| Subtotal | 395,562 | 56,509 | 56,959 | 101% |
| Main hangar and F.B.O. area | | | | |
| Main Hangar | 104,291 | 14,899 | 14,480 | 97% |
| Commercial Hangars | 194,583 | 27,798 | 26,903 | 97% |
| Land Leases | 55,825 | 7,975 | 7,975 | 100% |
| Subtotal | 354,698 | 50,671 | 49,358 | 97% |
| Terminal area | | | | |
| Car Rental and Ground Transportation | 112,117 | 16,017 | 11,181 | 70% |
| Terminal Space Lease | 101,984 | 14,569 | 13,984 | 96% |
| TSA LEO Reimbursement | 7,260 | 1,037 | | 0% |
| Subtotal | 221,362 | 31,623 | 25,165 | 80% |
| Revenue generating land | | | | |
| Land Lease Recreational | 24,128 | 3,447 | 3,811 | 111% |
| Agricultural Leases | 415,643 | 59,378 | 60,444 | 102% |
| Airport Business Park | 81,200 | 11,600 | 11,600 | 100% |
| Airport Hotel | 102,570 | 14,653 | 12,060 | 82% |
| Airport Mobile Home Park | 271,775 | 38,825 | 37,858 | 98% |
| Subtotal | 895,315 | 127,902 | 125,773 | 98% |
| Administrative | | | | |
| Badging Income | 3,135 | 448 | 655 | 146% |
| Miscellaneous Income | 1,095 | 156 | 58 | 37% |
| Subtotal | 4,230 | 604 | 713 | 118% |
| Air Show Revenue | 230,665 | 32,952 | | 0% |
| Subtotal | 230,665 | 32,952 | 1,426 | 4% |
| Total revenues from operations | 2,178,034 | 311,148 | 268,338 | 86% |
| Operating Expenses: | | | | |
| Landing area | 61,662 | 8,809 | 5,277 | 60% |
| Hangar area | 36,676 | 5,239 | 3,074 | 59% |
| Main hangar and F.B.O. | 46,842 | 6,692 | 4,327 | 65% |
| Terminal area | 173,347 | 24,764 | 16,276 | 66% |
| Revenue generating land | 220,184 | 31,455 | 29,429 | 94% |
| Payroll and Benefits | 823,102 | 117,586 | 98,267 | 84% |
| Utilities | 43,709 | 6,244 | 3,905 | 63% |
| Supplies | 38,778 | 5,540 | 2,464 | 44% |
| Maintenance and Repairs | 26,077 | 3,725 | 4,266 | 115% |
| Contractual Services | 307,537 | 43,934 | 20,807 | 47% |
| ARFF Services | 188,445 | 26,921 | | 0% |
| Security Services | 128,555 | 18,365 | 1,661 | 9% |
| Office Supplies/Postage/Printing and Stationery | 13,429 | 1,918 | 927 | 48% |
| Dues and Subscriptions | 24,704 | 3,529 | 300 | 9% |
| Advertising | 37,291 | 5,327 | 10,016 | 188% |
| Depreciation | 1,116,342 | 159,477 | | 0% |
| Insurance | 74,183 | 10,598 | 454 | 4% |
| Business Travel and Entertainment | 36,422 | 5,203 | 4,358 | 84% |
| Air Show Expense | 525,542 | 75,077 | 7,061 | 9% |
| Other Miscellaneous Expense | 15,595 | 2,228 | 3,557 | 160% |
| Total Expenses | 3,938,424 | 562,632 | 216,425 | 38% |
| Operating income (loss) | (1,760,389) | (251,484) | 51,913 | -21% |
| Non-Operating Revenues (Expenses): | | | | |
| PFC Revenue | 55,110 | 7,873 | | 0% |
| Interest income | 105,951 | 15,136 | 28,807 | 190% |
| Tax revenues | 1,000,441 | 142,920 | 12,486 | 9% |
| AIP grant | 914,657 | 130,665 | | 0% |
| Miscellaneous income | | | | |
| Total non-operating rev (exp) | 2,076,159 | 296,594 | 41,294 | 14% |
| Net Income | 315,769 | 45,110 | 93,206 | 207% |



February 27, 2020

Board of Directors
Santa Maria Public Airport District
3217 Terminal Drive
Santa Maria, CA 93455

Subject: Sampling Proposal for PFAS

Recommendation

It is recommended that the Board authorize the General Manager execute a contract and proceed with sampling for PFAS through SCS Engineers.

Discussion

The District received an Order (attached) from the State Water Resources Control Board (SWRCB) to develop a workplan to sample airport property for PFAS, a chemical known to be in Aqueous Film Forming Foam (AFFF) used as an extinguishing agent as required by the FAA for Aircraft Rescue Firefighting operations at all FAR part 139 Airports. Through our consultant SCS Engineers a work plan was developed and ultimately approved by the SWRCB (attached) for a total expense of \$6,500 plus expenses for site visits with SWRCB staff.

The District is required to conduct sampling prior to March 22, 2020. Due to lab and drilling team availability we have requested an extension and expect approval to complete work by May 31, 2020. The full work plan and proposal are available for review, total cost the sampling and lab analysis is estimated to be \$68,380. Although this is a large expense, staff was very pleased with the work done by SCS Engineers to produce an initial work plan that resulted in a commonsense approach and considerable savings over neighboring airports who have reportedly spent an average of \$200,000 for their sampling efforts. Staff and District Counsel remain engaged to find additional resources for possible reimbursement of these funds.

Please let me know if you have any questions.

Sincerely,

CHRIS HASTERT, CM
General Manager

Central Coast Regional Water Quality Control Board

March 20, 2019

CERTIFIED MAIL: 7016 2140 0000 6901 4834

Rick Tokoph, Operations Manager
Santa Maria Airport
3217 Terminal Dr.
Santa Maria, CA 93455

WATER CODE SECTION 13267 ORDER WQ 2019-0005-DWQ FOR THE DETERMINATION OF THE PRESENCE OF PER- AND POLYFLUOROALKYL SUBSTANCES AT Santa Maria Pub/Capt G Allan Hancock Fld, AIRPORT ID SMX, Santa Barbara County, T10000012770

The enclosed Order was issued pursuant to Water Code section 13267 by the State Water Resources Control Board (State Water Board) and requires that Santa Maria Public Arpt Dist submit information to the Central Coast Regional Water Quality Control Board (Regional Water Board).

Santa Maria Pub/Capt G Allan Hancock Fld¹ is identified as a facility that has accepted, stored, or used materials that may contain per- and polyfluoroalkyl substances (PFAS). Order WQ 2019-0005-DWQ requires you to submit technical reports to investigate PFAS impacts to your site as specified in the Order attachment. If you do not accept these materials, you may submit the completed questionnaire included in the Order.

If you have any questions regarding this Order, please contact Greg Bishop at (805) 549-3132 or by email at Greg.bishop@waterboards.ca.gov. Additional questions can be sent via email to pfas@waterboards.ca.gov. PFAS related State Water Board activities, information, and contact information can be found at <http://waterboards.ca.gov/pfas>.



John M. Robertson
Executive Officer

¹ Facility names and owner are those listed on the U.S. Department of Transportation Federal Aviation Administration Airport Master Record (FAA FORM 5010-1) and were obtained from <https://www.gcr1.com/5010WEB/>.

Enclosure: Order WQ 2019-0005-DWQ

cc (via email): Greg Bishop, Central Coast Regional Water Board
Patrick Magnotta, Airport Planning and Environment Division, Federal Aviation
Administration
Anthony Butters, Airport Safety and Operations Division, Federal Aviation
Administration

State Water Resources Control Board

WATER CODE SECTION 13267 ORDER FOR THE DETERMINATION OF THE PRESENCE OF PER- AND POLYFLUOROALKYL SUBSTANCES

ORDER WQ 2019-0005-DWQ

Pursuant to Water Code section 13267, The State Water Resources Control Board (State Water Board) requires you to submit information as described below. Failure to comply with this Order may subject you to civil liability of up to \$5,000 per day for each day in which the violation occurs.

Your site is identified in **Attachment 1** as a facility that has accepted, stored, or used materials that may contain per- and polyfluoroalkyl substances (PFAS). Therefore, you are required to submit the information in **Attachment 2** to the appropriate Regional Water Quality Control Board (Regional Water Board) identified in the cover letter.

I. BACKGROUND

A. WHAT ARE PFAS?

PFAS is a family of more than 3,000 man-made and mostly unregulated chemicals that have been produced since the mid-1900s. They are mobile, persistent, and bioaccumulative. They are resistant to degradation in the environment and when degradation occurs, it often results in the formation of other PFAS compounds. The PFAS compounds have very different physical and chemical properties. Currently the key classes of concern are perfluoroalkyl sulfonic acids such as the long-chain, more commonly known PFAS, perfluorooctanesulfonate (PFOS) and perfluorooctanoic acid (PFOA).

PFAS are manufactured globally and have been used in the production of a wide range of industrial and household products. PFAS are found in many products such as dental floss, non-stick cookware, food packaging materials, non-stick products (e.g., Teflon™), waterproof and water repellant textiles, water repellant furniture, carpet, polishes, waxes, paints, cleaning products, medical garments, and fire-fighting foams (Aqueous Film-Forming Foams or AFFF). PFAS are used in the Aerospace, Automotive, Chemical, Electronics, Metal Coatings and Plating, and Textiles industries due to their friction-reducing characteristics. Potential firefighting sources of PFAS include airports

and aviation facilities, military bases and training centers, petroleum refineries and terminals, and petrochemical production facilities. Non-industrial PFAS sources include Waste Disposal Facilities, Wastewater Treatment Plant Operations, and Biosolids Application to Agriculture. Secondary sources of PFAS include waste streams such as landfills and wastewater treatment plants. More information on PFAS chemicals can be found at United States Environmental Protection Agency (U.S. EPA) website at: <https://www.epa.gov/pfas>.

PFAS are extremely persistent in the environment and highly mobile in water. People are exposed to PFOS and PFOA through food, food packaging, consumer products, house dust, and drinking water. Since these chemicals have been used in an array of consumer products, scientists have found PFOA and PFOS in the blood of nearly all people tested. Exposure through drinking water has become an increasing concern due to the tendency of PFAS to accumulate in groundwater.

Based on the current available peer-reviewed studies on laboratory animals and epidemiological evidence in human populations, the U.S. EPA released the following statement:

“These studies indicate that exposure to PFOA and PFOS over certain levels may result in adverse health effects, including developmental effects to fetuses during pregnancy or to breastfed infants (e.g., low birth weight, accelerated puberty, skeletal variations), cancer (e.g., testicular, kidney), liver effects (e.g., tissue damage), immune effects (e.g., antibody production and immunity), thyroid effects and other effects (e.g., cholesterol changes).”

Please see U.S. EPA Technical Note for more information:

https://www.epa.gov/sites/production/files/2017-12/documents/ffrrofactsheet_contaminants_pfos_pfoa_11-20-17_508_0.pdf

B. WHICH PFAS?

We are interested in all PFAS that exist in the environment. Due to analytical limitations, the focus of this order is on 39 PFAS analytes including PFOA and PFOS listed in **Attachment 2**. The PFAS analyte list is not exhaustive but is intended to serve as a minimum requirement for sampling pursuant to this Order. Some laboratories may be capable of analyzing additional PFAS that are not included on the list.

C. WHY IS THIS ACTIVITY REQUIRED?

The State Water Board and the Regional Water Boards are charged with the protection of the beneficial uses of water in California, including water used or intended for use as drinking water. If PFAS were used, or materials suspected of containing PFAS were disposed at your facility, technical reports are required to investigate the presence of PFAS. This is part of a statewide effort to determine whether the groundwater is impacted by PFAS and obtain a preliminary understanding of PFAS concentrations at facilities. The State Water Board intends to direct other dischargers identified as potential PFAS sources in the state to perform PFAS testing. The State Water Board and the Regional Water Boards will evaluate the data collected to make informed

decisions in implementing appropriate regulatory action, in anticipation of emerging regulatory standards for PFAS.

In May 2016, the United States Environmental Protection Agency (U.S. EPA) established Health Advisory Levels of 70 parts per trillion (ppt) (0.07 micrograms per liter (µg/L)) for PFOA and 70 ppt for PFOS. These concentrations are now considered a screening level. For more information on these advisories see U.S. EPA's website at: <https://www.epa.gov/ground-water-and-drinking-water/drinking-water-health-advisories-pfoa-and-pfos>.

Additionally, in July 2018, the State Water Board's Division of Drinking Water (DDW) issued drinking water notification levels for PFOS and PFOA at 13 ppt and 14 ppt, respectively, per recommendations from California's Office of Environmental Health Hazard Assessment (OEHHA). DDW requires a combined PFOS/PFOA response level of 70 ppt. More information on notification levels for PFAS compounds can be found at: https://www.waterboards.ca.gov/drinking_water/certlic/drinkingwater/PFOA_PFOS.html.

Water Code section 106.3 indicates it is the policy of the State of California that every human being has the right to safe, clean, affordable, and accessible water adequate for human consumption, cooking, and sanitary purposes. This Order promotes that policy by directing investigations to determine the presence of PFAS in and near waters that could be used for drinking water purposes.

Additional justification supporting the need for the investigation is included in **Attachment 2**.

II. WATER CODE SECTION 13267 ORDER FOR TECHNICAL REPORTS

Water Code section 13267(b), provides that "a regional board may require any person who has discharged, discharges, or is suspected of having discharged or discharging, or who proposes to discharge waste within its region... or is suspected of having discharged or discharging, or who proposes to discharge, waste outside of its region that could affect the quality of water within its region shall furnish, under penalty of perjury, technical or monitoring reports which the regional board requires... In requiring those reports, the regional board shall provide the person with a written explanation with regard to the need for the reports and shall identify the evidence that supports requiring that person to provide the reports."

Water Code section 13267(f) authorizes the State Water Board to require this information if it consults with the Regional Water Boards and determines that it will not duplicate the efforts of the Regional Water Boards. The State Water Board has consulted with the Regional Water Boards and made this determination. The release of PFAS into the environment or the disposal of wastes containing PFAS constitutes a discharge of waste as defined in Water Code section 13050(d).

Pursuant to this authority, **you are hereby ordered to submit technical reports identified in Attachment 2.** Additional information regarding requirements for submitting technical reports under Section 13267 of the Water Code is included as **Attachment 3.**

III. COST AND BENEFIT OF TECHNICAL REPORTS

Water Code section 13267(b) specifies that the burden, including costs, of these reports must bear a reasonable relationship to the State Water Board's need for the reports and the benefits to be obtained from the reports.

The cost of the technical reports bears a reasonable relationship to the benefit to be gained because, in terms of public health and environmental harm, contamination of groundwater must be identified before corrective action can be taken, if appropriate.

IV. CALIFORNIA ENVIRONMENTAL QUALITY ACT

The issuance of this Order is an action to protect the environment and is categorically exempt from the provisions of the California Environmental Quality Act pursuant to sections 15304 and 15308, Chapter 3, Title 14 of the California Code of Regulations.

V. PENALTIES

Water Code section 13268 provides that failure to submit the required information by the specified compliance date, or falsifying any information provided therein, is a misdemeanor and may result in civil liability. Noncompliance may subject you to civil liability in the amount of up to \$5,000 for each day of violation. Please be advised that compliance with this Order is not a substitute for compliance with other applicable laws.

Perjury Statement

Pursuant to Water Code section 13267(b)(1), the Water Board requires you to include the following perjury statement, signed by a duly authorized representative, in all reports submitted pursuant to this Order:

"I, [NAME], certify under penalty of law that this document and all attachments were prepared by me, or under my direction or supervision, and the information submitted is, to the best of my knowledge and belief, true, accurate, and complete. I am aware that there are significant civil penalties for submitting false information."

March 20, 2019



Date

Eileen Sobeck
Executive Director

ATTACHMENTS:

Attachment 1 - List of Facilities

Attachment 2 - Technical Report Requirements & Questionnaire

**Attachment 3 - Fact Sheet – Requirements for Submitting Technical Reports
under Section 13267 of the Water Code**

ATTACHMENT 1

LIST OF AIRPORT FACILITIES

CALIFORNIA WATER CODE SECTION 13267 ORDER FOR THE DETERMINATION OF THE PRESENCE OF PER- AND POLYFLUOROALKYL SUBSTANCES

AIRPORTS CERTIFIED FOR AQUEOUS FILM FORMING FOAM (AFFF) USE

| FACILITY NAME ¹ (AIRPORT ID) | GEOTRACKER GLOBAL ID | PROPERTY ADDRESS | OWNER ¹ |
|---|-------------------------|--|--|
| JACK MC NAMARA FIELD (CEC) | T10000012761 | 150 DALE RUPERT RD CRESCENT CITY, CA 95531 | BORDER COAST REGIONAL ARPT AUTH 150 DALE RUPERT ROAD CRESCENT CITY, CA 95531 |
| CALIFORNIA REDWOOD COAST- HUMBOLDT COUNTY (ACV) | T10000012762 | 3561 BOEING AVE. MCKINLEYVILLE, CA 95519 | HUMBOLDT COUNTY 1106 SECOND ST EUREKA, CA 95501 |
| CHARLES M SCHULZ - SONOMA COUNTY (STS) | T10000012763 | 2290 AIRPORT BLVD SANTA ROSA, CA 95403 | SONOMA COUNTY 2290 AIRPORT BLVD SANTA ROSA, CA 95403 |
| METROPOLITAN OAKLAND INTL (OAK) | T10000012764 | 1 Airport Dr, OAKLAND, CA 94621 | PORT OF OAKLAND 530 WATER ST. OAKLAND, CA 94607 |
| BUCHANAN FIELD (CCR) | T10000012765 | 550 SALLY RIDE DR. CONCORD, CA 94520 | CONTRA COSTA COUNTY 550 SALLY RIDE DR. CONCORD, CA 94520 |
| SAN FRANCISCO INTL (SFO) | T10000012790 | SAN FRANCISCO, CA 94128 | CITY & COUNTY OF SAN FRANCISCO PO BOX 8097 SAN FRANCISCO, CA 94128 |
| NORMAN Y MINETA SAN JOSE INTL (SJC) | T10000012766 | 1701 AIRPORT BLVD., SUITE B-1130 SAN JOSE, CA 95110-1206 | CITY OF SAN JOSE 200 E. SANTA CLARA STREET SAN JOSE, CA 95113 |
| MONTEREY RGNL (MRY) | T10000012767 | 200 FRED KANE DR., SUITE 200 MONTEREY, CA 93940 | MONTEREY PENIN ARPT DIST 200 FRED KANE DR., SUITE 200 MONTEREY, CA 93940 |
| SAN LUIS COUNTY RGNL (SBP) | T10000012768 | 975 AIRPORT DRIVE, SUITE 1 SAN LUIS OBISPO, CA 93401 | SAN LUIS OBISPO COUNTY COUNTY GOVERNMENT CENTER SAN LUIS OBISPO, CA 93408 |

| FACILITY NAME¹ (AIRPORT ID) | GEOTRACKER GLOBAL ID | PROPERTY ADDRESS | OWNER¹ |
|--|---------------------------------|--|--|
| SANTA BARBARA MUNI (SBA) | T10000012769 | 601 FIRESTONE RD GOLETA, CA 93117 | CITY OF SANTA BARBARA CITY HALL SANTA BARBARA, CA 93101 |
| SANTA MARIA PUB/CAPT G ALLAN HANCOCK FLD (SMX) | T10000012770 | 3217 TERMINAL DR SANTA MARIA, CA 93455 | SANTA MARIA PUBLIC ARPT DIST 3217 TERMINAL DR SANTA MARIA, CA 93455 |
| BOB HOPE (BUR) | T10000012771 | 2627 HOLLYWOOD WAY BURBANK, CA 91505 | BURBANK-GLENDALE-PASADENA ARPT 2627 HOLLYWOOD WAY BURBANK, CA 91505 |
| LONG BEACH /DAUGHERTY FIELD/ (LGB) | T10000012772 | 4100 DONALD DOUGLAS DR LONG BEACH, CA 90808 | CITY OF LONG BEACH CITY HALL 333 W. OCEAN LONG BEACH, CA 90802 |
| LOS ANGELES INTL (LAX) | T10000012773 | ONE WORLD WAY LOS ANGELES, CA 90009 | CITY OF LOS ANGELES 1 WORLD WAY BOX 92216 LOS ANGELES, CA 90009-2216 |
| OXNARD (OXR) | T10000012774 | 2889 W 5TH ST OXNARD, CA 93030 | COUNTY OF VENTURA 555 AIRPORT WAY CAMARILLO, CA 93010 |
| CHICO MUNI (CIC) | T10000012788 | 150 Airpark Blvd CHICO, CA 95927 | CITY OF CHICO PO BOX 3420 CHICO, CA 95927 |
| FRESNO YOSEMITE INTL (FAT) | T10000012775 | 4995 E CLINTON WAY FRESNO, CA 93727 | CITY OF FRESNO 4995 E CLINTON WAY FRESNO, CA 93727 |
| MEADOWS FIELD (BFL) | T10000012776 | 3701 WINGS WAY, #300 BAKERSFIELD, CA 93308 | COUNTY OF KERN DEPT OF ARPTS, 3701 WINGS WAY, #300, 3701 WINGS WAY, SUITE 300 BAKERSFIELD, CA 93308 |
| SACRAMENTO INTL (SMF) | T10000012777 | 6900 AIRPORT BLVD SACRAMENTO, CA 95837 | COUNTY OF SACRAMENTO 6900 AIRPORT BLVD SACRAMENTO, CA 95837 |

| FACILITY NAME¹ (AIRPORT ID) | GEOTRACKER GLOBAL ID | PROPERTY ADDRESS | OWNER¹ |
|---|---------------------------------|--|--|
| STOCKTON METROPOLITAN (SCK) | T10000012778 | 5000 S. AIRPORT WAY ROOM 202 STOCKTON, CA 95206 | COUNTY OF SAN JOAQUIN 5000 S AIRPORT WAY STOCKTON, CA 95206 |
| REDDING MUNI (RDD) | T10000012779 | REDDING MUNI AIRPORT, 6751 WOODRUM CIRCLE SUITE 200 REDDING, CA 96002 | CITY OF REDDING AIRPORTS DIVISION, 6751 WOODRUM CIRCLE, #200 REDDING, CA 96002-6071 |
| MAMMOTH YOSEMITE (MMH) | T10000012789 | 1300 Airport Road MAMMOTH LAKES, CA 93546 | TOWN OF MAMMOTH LAKES 1300 AIRPORT ROAD MAMMOTH LAKES, CA 93546 760-934-3813 |
| SOUTHERN CALIFORNIA LOGISTICS (VCV) | T10000012780 | 18374 PHANTOM WEST VICTORVILLE, CA 92394 | SOUTHERN CA LOGISTICS ARPT AUTH 18374 PHANTOM VICTORVILLE, CA 92394 |
| IMPERIAL COUNTY (IPL) | T10000012781 | 1099 AIRPORT ROAD IMPERIAL, CA 92251 | IMPERIAL COUNTY 1099 AIRPORT ROAD IMPERIAL, CA 92251 |
| PALM SPRINGS INTL (PSP) | T10000012782 | 3400 E. TAHQUITZ-CANYON WAY, SUITE OFC PALM SPRINGS, CA 92262 | CITY OF PALM SPRINGS 3400 E. TAHQUITZ CANYON WAY PALM SPRINGS, CA 92262 |
| MC CLELLAN-PALOMAR (CRQ) | T10000012786 | 2192 PALOMAR AIRPORT ROAD CARLSBAD, CA 92011-4409 | COUNTY OF SAN DIEGO 1960 JOE CROSSON DRIVE EL CAJON, CA 92020-1235 |
| SAN DIEGO INTL (SAN) | T10000012787 | 3225 N HARBOR DRIVE SAN DIEGO, CA 92101-1022 | SAN DIEGO CNTY REG ARPT AUTHORITY 3225 N HARBOR DRIVE SAN DIEGO, CA 92101-1022 |

¹ Facility name and owner are those listed on the U.S. Department of Transportation Federal Aviation Administration Airport Master Record (FAA FORM 5010-1) and were obtained from <https://www.gcr1.com/5010WEB/>.

ATTACHMENT 2
TECHNICAL REPORT REQUIREMENTS AND QUESTIONNAIRE
FOR
AIRPORTS

WATER CODE SECTION 13267 ORDER FOR THE DETERMINATION OF THE
PRESENCE OF PER- AND POLYFLUOROALKYL SUBSTANCES

Contents:

- A. Justification for the Need for Technical Reports*
- B. Technical Report Requirements*
- C. Airport Operator Questionnaire*

A. JUSTIFICATION FOR THE NEED FOR TECHNICAL REPORTS

As indicated by the Federal Aviation Administration (FAA)¹, all Title 14, Code of Federal Regulations, Part 139 certified airports are required to provide aircraft rescue and firefighting services. Your facility has been certified by the FAA to use AFFF compounds. If AFFF or other PFAS compounds were disposed of, discharged to, spilled, or released in any way to lands of your facility, a work plan is required for the preliminary investigation of soil and groundwater impacts (Section B). The State Water Board seeks to determine whether the groundwater and/or soil at your location is impacted by PFAS and obtain a preliminary understanding of PFAS concentrations in the soil and/or groundwater at your facility.

The State Water Board intends to direct other dischargers identified as potential PFAS sources in the state to perform PFAS testing. The State Water Board and the Regional Water Boards will evaluate the data collected to make informed decisions in implementing appropriate regulatory action, in anticipation of emerging regulatory standards for PFAS.

B. TECHNICAL REPORT REQUIREMENTS

Work Plan

You are required to submit a work plan for a one-time preliminary site investigation of PFAS impacts at your facility to the Regional Water Board specified in the Order cover letter **no later than 60 days following the date of this Order**. This attachment provides specific requirements to include in the technical report.

¹ https://www.faa.gov/airports/airport_safety/part139_cert/

At a minimum, provide the following in your work plan:

1. A site map with sample locations, PFAS material storage and use areas, probable release areas including firefighting training areas, crash sites, and spills from handling.
2. Identify sensitive receptors such as municipal supply wells, domestic wells, and/or surface water bodies within a one-mile radius of a suspected source area.
3. Proposed surface and subsurface soil sampling locations to delineate surficial and vertical extent of impacts where PFAS were applied to land.
4. Proposed representative groundwater sample locations in proximity to a suspected source area. Existing monitoring wells for your facility may be used if located in proximity to PFAS source(s) and groundwater samples would be representative of groundwater conditions. If groundwater gradient is unknown, at a minimum, three groundwater samples must be collected around the source area.
5. Sampling and Analysis Plan for compounds and parameters specified in Tables 1 and 2 that includes quality assurance and quality control procedures necessary to ensure valid and representative data is obtained and reported. Specify the appropriate sampling procedures, including sampling equipment, sampling containers, the quality of water used for blank preparation and equipment decontamination, sample holding times, and quantities for sampling PFAS compounds. To minimize contamination, all sampling materials, equipment, blanks, containers, and equipment decontamination reagents must be PFAS-free, to the maximum extent practicable. Additional guidance for preventing sample contamination can be found at:
https://www.waterboards.ca.gov/water_issues/programs/pfas/.
6. Reporting limits for PFAS.
7. Signature, stamp, and contact information for the California-licensed Professional Geologist or Professional Engineer acting in responsible charge for the content of the Work Plan.

Final Report

A final sampling and analysis report, including at least the following information, must be submitted **no later than 90 days** following the State or Regional Water Board acceptance of the Work Plan:

- a) A description of the sampling activities;
- b) A summary table of analytical results;

- c) A copy of the Chain of Custody;
- d) A copy of the field sampling log;
- e) A copy of boring logs and any temporary/permanent monitoring well construction details
- f) A copy of the site map showing the sampling/monitoring locations; and
- g) A copy of laboratory analytical results of the monitored media.

Questionnaire

If you 1) have not discharged, disposed of, spilled, or released in any way, AFFF or other PFAS containing materials to land at your facility, or 2) have already conducted sampling for these constituents in compliance with the minimum work plan requirements listed below, please complete the questionnaire (Section C) with relevant information supporting your response and return to the Regional Water Board specified in the Order cover letter **no later than 30 days following the date of this Order.**

Report Submittal

Reports must be submitted in a searchable electronic format, with transmittal letter, text, tables, figures, laboratory analytical data, and appendices in Portable Document Format (PDF) format (one PDF for the entire report) as well as in electronic data deliverable (EDD) format. The Questionnaire, Work Plan, Final Report, and Analytical Reports and EDD must be uploaded into GeoTracker via the Electronic Submittal of Information (ESI) Portal, as stipulated by California State law. GeoTracker ESI guidance, general information and Help Desk assistance can be on the ESI homepage at:

https://www.waterboards.ca.gov/water_issues/programs/ust/electronic_submittal/

The analytical laboratory must be accredited by the California Environmental Laboratory Accreditation Program (ELAP) to perform the analytical method for PFAS compliant with Department of Defense (DoD) Table B-15 of Quality Systems Manual (QSM), dated 2017, version 5.1 or later. The laboratory must have the capacity to quantify the target PFAS analytes listed in Table 1, and must be capable of achieving the quality control/quality assurance requirements specified in Table B-15 of the DoD QSM, version 5.1 or later. DoD's QSM version 5.1 can be found at:

<https://www.denix.osd.mil/edqw/documents/documents/qsm-version-5-1-final/> as well as on the State Water Board's PFAS informational website:

https://www.waterboards.ca.gov/water_issues/programs/pfas/. A list of laboratories that are accredited by ELAP can be found on the State Water Board ELAP webpage:

https://www.waterboards.ca.gov/drinking_water/certlic/labs/. For the general parameters listed in Table 2, the method of analysis shall be appropriate for the expected concentrations.

TABLE 1. PFAS Analytes Subject to Analysis

| Chemical Name | Abbreviation | Chemical Abstracts Service (CAS) No. |
|--|--------------|--------------------------------------|
| 2,3,3,3-Tetrafluoro-2-(heptafluoropropoxy)propanoic acid | HFPO-DA | 13252-13-6* |
| 10:2 Fluorotelomer sulfonic acid | 10:2 FTS | 120226-60-0* |
| 2,3,3,3-tetrafluoro-2-(1,1,2,2,3,3,3-heptafluoropropoxy) propanoic Acid | HFPA-DA | 13252-13-6 * |
| Perfluorooctadecanoic acid | PFOcDA | 16517-11-6* |
| N-Ethyl perfluorooctane sulfonamidoethanol | EtFOSE | 1691-99-2* |
| Perfluorooctane sulfonic acid | PFOS | 1763-23-1 |
| Perfluoroundecanoic acid | PFUnDA | 2058-94-8 |
| N-Methyl perfluorooctane sulfonamidoacetic acid | NMeFOSAA | 2355-31-9 |
| N-Methyl perfluorooctane sulfonamidoethanol | MeFOSE | 24448-09-7* |
| Perfluoropentanoic Acid | PFPeA | 2706-90-3 |
| Perfluoropentane sulfonic acid | PFPeS | 2706-91-4 |
| 6:2 Fluorotelomer sulfonic acid | 6:2 FTS | 27619-97-2 |
| N-Ethyl perfluorooctane sulfonamidoacetic acid | NEtFOSAA | 2991-50-6 |
| Perfluorohexanoic acid | PFHxA | 307-24-4 |
| 1.0Perfluorododecanoic acid | PFDODA | 307-55-1 |
| N-Methyl perfluorooctane sulfonamide | MeFOSA | 31506-32-8* |
| Perfluorooctanoic acid | PFOA | 335-67-1 |
| Perfluorodecanoic acid | PFDA | 335-76-2 |
| Perfluorodecane sulfonic acid | PFDS | 335-77-3 |
| 4,4,5,5,6,6,6-Heptafluorohexanoic Acid | 3:3 FTCA | 356-02-5* |
| Perfluorohexane sulfonic acid | PFHxS | 355-46-4 |
| Perfluorobutanoic acid | PFBA | 375-22-4 |
| Perfluorobutane sulfonic acid | PFBS | 375-73-5 |
| Perfluoroheptanoic acid | PFHpA | 375-85-9 |
| Perfluoroheptane sulfonic acid | PFHpS | 375-92-8 |
| Perfluorononanoic acid | PFNA | 375-95-1 |
| Perfluorotetradecanoic acid | PFTeDA | 376-06-7 |
| 2H,2H,3H,3H-Perfluorodecanoic acid | 7:3 FTCA | 812-70-4* |
| 8:2 Fluorotelomer sulfonic acid | 8:2 FTS | 39108-34-4 |
| N-Ethyl perfluorooctane sulfonamide | EtFOSA | 4151-50-2* |
| Perfluorononane sulfonic acid | PFNS | 474511-07-4* |
| Perfluorohexadecanoic acid | PFHxDA | 67905-19-5* |
| Perfluorotridecanoic acid | PFTTrDA | 72629-94-8 |
| Perfluorooctanesulfonamide | FOSA | 754-91-6 |
| 4:2 Fluorotelomer sulfonic acid | 4:2 FTS | 757124-72-4 |
| Perfluoro(2-((6-chlorohexyl)oxy)ethanesulfonic acid) | 9CI-PF3ONS | 756426-58-1* |
| 2-[(8-Chloro-1,1,2,2,3,3,4,4,5,5,6,6,7,7,8,8-hexadecafluorooctyl)oxy]-1,1,2,2-tetrafluoroethanesulfonic acid | 11CI-PF3OUdS | 763051-92-9* |
| 2H,2H,3H,3H-Perfluorooctanoic Acid (CAS 914637-49-3) | 5:3 FTCA | 914637-49-3* |
| 4,8-Dioxa-3H-perfluorononanoic acid | Adona | 919005-14-4* |

Note: Only the 23 analytes without the asterisk (*) are required to be analyzed as part of this Order. The analytes with the asterisk (*) are included in some but not all lists provided by accredited laboratories and are encouraged to be analyzed as part of this effort.

TABLE 2
Field Parameters and General Chemistry for Groundwater

| Parameter | Units |
|---|-----------|
| Field Parameters | |
| Depth to Groundwater | Feet, bgs |
| Temperature | Degrees C |
| Electrical Conductivity | µmhos/cm |
| pH | units |
| Turbidity | NTU |
| General Chemistry | |
| Total Dissolved Solids | mg/L |
| Chloride | mg/L |
| Carbonate | mg/L |
| Bicarbonate | mg/L |
| Nitrate-Nitrogen | mg/L |
| Sulfate | mg/L |
| Calcium | mg/L |
| Magnesium | mg/L |
| Potassium | mg/L |
| Sodium | mg/L |
| Notes: bgs – below ground surface C – Celsius mg/L – milligrams NTU – nephelometric turbidity units µmhos/cm – micromhos per centimeter | |

C. AIRPORT OPERATOR QUESTIONNAIRE

| | | | |
|--|--|------------------------------|-----------------------------|
| Operator/Principal Name: | | Title: | |
| Name of Facility: | | | |
| Facility's Address: | | | |
| City/County/State/Zip: | | | |
| Phone Number: | | Fax: | |
| Email Address: | | | |
| PER- AND POLY-FLUOROALKYL SUBSTANCES (PFAS) - CONSTITUENT SCREENING | | | |
| 1. | Have PFAS, including fire-fighting foams (i.e. Aqueous Film-Forming Foam [AFFF]), or any other PFAS compounds been used or stored at your facility? | <input type="checkbox"/> YES | <input type="checkbox"/> NO |
| | <i>If yes, please attach additional sheets to describe where they were/are stored, handling processes utilized, and how long you have used/stored those PFAS at your facility.</i> | | |
| 2. | Have PFAS been discharged, spilled, disposed of, released in any way, or applied to land at your facility? | <input type="checkbox"/> YES | <input type="checkbox"/> NO |
| 3. | If PFAS were discharged, spilled, disposed of, released in any way, or applied to land at your facility, have any investigations to identify the impacts of PFAS to soil and groundwater been conducted at your facility? | <input type="checkbox"/> YES | <input type="checkbox"/> NO |
| | <i>If yes, please attach additional sheets to describe where and when PFAS were discharged, spilled, disposed of, released in any way, or applied to land, the quantity, the method of analysis, a summary table of analytical results, as well as the laboratory analytical report.</i> | | |
| CERTIFICATION | | | |
| <p>This form is only required to be completed if your facility did not discharge, spill, dispose, release in any way, or apply PFAS compounds to land, or you have already conducted sampling for PFAS compounds. This form and supporting documentation must be provided to the appropriate Regional Water Board and uploaded to GeoTracker by the date specified in the Order.</p> <p>I, _____, certify under penalty of law that this document and all attachments were prepared by me, or under my direction or supervision, and the information submitted is, to the best of my knowledge and belief, true, accurate, and complete. I am aware that there are significant civil penalties for submitting false information.</p> <p>Signature: Title: Date:</p> | | | |

State Water Resources Control Board

ATTACHMENT 3

Fact Sheet – Requirements for Submitting Technical Reports Under Section 13267 of the Water Code

What does it mean when the Regional Water Board or the State Water Board (jointly referred to as the Water Boards) require a technical report?

Section 13267¹ of the Water Code provides that "...the regional board may require that any person who has discharged, discharges, or who is suspected of having discharged or discharging, or who proposes to discharge waste...that could affect the quality of waters...shall furnish, under penalty of perjury, technical or monitoring program reports which the regional board requires." Additionally, the state water board may carry out the authority granted to a regional board pursuant to Section 13267 if, after consulting with the regional board, the state board determines that it will not duplicate the efforts of the regional board.

This requirement for a technical report seems to mean that I am guilty of something, or at least responsible for cleaning something up. What if that is not so?

The requirement for a technical report is a tool the Water Boards use to investigate water quality issues or problems. The information provided can be used by the Regional Water Board to clarify whether a given party has responsibility.

Are there limits to what the Water Boards can ask for?

Yes. The information required must relate to an actual or suspected or proposed discharge of waste (including discharges of waste where the initial discharge occurred many years ago), and the burden of compliance must bear a reasonable relationship to the need for the report and the benefits obtained. The Water Boards are required to explain the reasons for its request.

What if I can provide the information, but not by the date specified?

A time extension may be given for good cause. Your request should be promptly submitted in writing, giving reasons.

Are there penalties if I don't comply?

Depending on the situation, the Water Boards can impose a fine of up to \$5,000 per day, and a court can impose fines of up to \$25,000 per day as well as criminal penalties. A person who submits false information or fails to comply with a requirement to submit a technical report may be found guilty of a misdemeanor. For some reports, submission of false information may be a felony.

Do I have to use a consultant or attorney to comply?

There is no legal requirement for this, but as a practical matter, in most cases the specialized nature of the information required makes use of a consultant and/or attorney advisable.

If I have more questions, whom do I ask?

Requirements for technical reports include the name, telephone number, and email address of the Regional Water Board staff contact.

¹ All code sections referenced herein can be found by going to www.leginfo.ca.gov.

State Water Resources Control Board

MAY - 9 2019

Mr. Ivar Satero, Mr. Jon Stout, and Mr. Jim Lites
California Airports Council
980 9th Street, Suite 2000
Sacramento, CA 95814

EXTENSION APPROVAL OF DEADLINES FOR SUBMITTING SITE-SPECIFIC AIRPORT WORK PLANS AND FINAL SAMPLING AND ANALYSIS REPORTS TO DETERMINE THE PRESENCE OF PER- AND POLYFLUOROALKYL SUBSTANCES (PFAS) SUBJECT TO THE MARCH 20, 2019, STATE WATER RESOURCES CONTROL BOARD ORDER WQ 2019-0005-DWQ

The State Water Resources Control Board (State Water Board) issued Water Code Section 13267 Order WQ 2019-0005-DWQ (Order) for the Determination of the Presence of Per- and Polyfluoroalkyl Substances on March 20, 2019. The Order includes requirements for submitting a work plan, questionnaire, and a final sampling and analysis report to the applicable Regional Water Quality Control Board (Regional Water Board) for a one-time preliminary site investigation of PFAS impacts to groundwater and soil for the twenty-seven airport facilities identified in Attachment 1 of the Order. The questionnaire, work plan, and final sampling and analysis report must be submitted no later than 30, 60 and 90 days, respectively, following the date of the Order. However, the Water Code and the Order allows a time extension for good cause.

On April 23, 2019, you submitted a letter to the State Water Board requesting an extension to the compliance deadlines stated in the Order. Your letter indicates that the extension was requested to ensure adequate time to go through a formal multiweek public Request for Proposals process, address resources, coordination among multiple entities and stakeholders, acquire permits, limited availability and responsiveness of local laboratories, address all requirements in the Order for the development of the work plans and testing for PFAS, and allow time for smaller airports to budget appropriately.

We have evaluated the information provided and believe the proposed deadline extensions for submitting work plans according to airport size are warranted and are hereby extended as follows. Deadline extension requests for final sampling and analysis reports should be submitted as part of the work plan.

E. JOAQUIN ESQUIVEL, CHAIR | EILEEN SOBECK, EXECUTIVE DIRECTOR

1001 I Street, Sacramento, CA 95814 | Mailing Address: P.O. Box 100, Sacramento, CA 95812-0100 | www.waterboards.ca.gov

| Airport Size | Effective Start Date | Work Plans Due (Days After Receipt of Order) |
|--------------|----------------------|--|
| Large-Hub | 4/1/2019 | 60 |
| Medium-Hub | 4/1/2019 | 75 |
| Small-Hub | 4/1/2019 | 120 |
| Non-Hub | 4/1/2019 | 120 |

Please note this extension request approval is only subject to airports identified in Order WQ 2019-0005-DWQ. Water Code Section 13267 orders sent to airports by our Santa Ana Regional Water Board are not subject to this extension request approval. Please contact Mr. Nick Amini at (951) 782-7958 with our Santa Ana Regional Water Board for this extension request.

If you have any questions or need additional information, please contact Mr. Steve McMasters, Site Cleanup & Department of Defense Program Unit Chief, State Water Board at (916) 341-5518.



Eileen Sobeck
Executive Director

Attachment:

California Airports Council. April 23, 2019 Due Date Extension Request Letter:
"Extension Request for Soil and Groundwater Investigation Concerning
Per and Poly-fluoroalkyl Substances (PFAS) at California Airports"

cc: Annalisa Kihara, State Water Board
Brianna St. Pierre, State Water Board
Josh Munn, State Water Board
Shahla Farahnak, State Water Board
Charles Reed, North Coast Regional Water Board
Alec Naugle, San Francisco Bay Regional Water Board
Greg Bishop, Central Coast Regional Water Board
Dr. Arthur Heath, Los Angeles Regional Water Board
Alex MacDonald, Central Valley Regional Water Board
Jan Zimmerman, Lahontan Regional Water Board
Joan Storm, Colorado River Basin Regional Water Board
Nick Amini, Santa Ana Regional Water Board
John Anderson, San Diego Regional Water Board
Jim Lites, California Strategies ([via email](#))
Sarah Johnson, California Strategies ([via email](#))



4/23/19

Steven McMasters
State Water Resources Control Board
1001 I Street
Sacramento, CA 95814

Charles Reed
California Regional Water Boards
North Coast – Region 1
5550 Skylane Blvd., Suite A
Santa Rosa, CA 95403

Alec Naugle
California Regional Water Boards
San Francisco Bay – Region 2
1515 Clay Street, Suite 1400
Oakland, CA 94612

Greg Bishop
Chair, California Regional Water Boards
Central Coast – Region 3
895 Aerovista Place, Suite 101
San Luis Obispo, CA 93401

Dr. Arthur Heath
California Regional Water Boards
Los Angeles – Region 4
320 W. Fourth Street, Suite 200
Los Angeles, CA 90013

Alex MacDonald
California Regional Water Boards
Central Valley – Region 5
11020 Sun Center Drive, #200
Rancho Cordova, CA 95670-6114

Jan Zimmerman
California Regional Water Boards
Lahontan – Region 6
14440 Civic Drive, Suite 200
Victorville, CA 92392

Joan Stormo
California Regional Water Boards
Colorado River Basin – Region 7
73-720 Fred Waring Drive, Suite 100
Palm Desert, CA 92260

Nick Amini
California Regional Water Boards
Santa Ana – Region 8
3737 Main Street, Suite 500
Riverside, CA 92501-3339

John Anderson
California Regional Water Boards
San Diego – Region 9
2375 Northside Drive, Suite 100
San Diego, CA 92108

**RE: Extension Request for Soil and Groundwater Investigation Concerning
Per and Poly-fluoroalkyl Substances (PFAS) at California Airports**

On behalf of the California Airports Council (CAC), we write to request an extension of the compliance deadlines detailed in the Water Code Section 13267 Order for the Determination of the Presence of PFAS Order WQ 2019-0005-DWQ (Order) distributed to California airports by the Regional Water Quality Control Boards (RWQCBs), dated March 20, 2019. The CAC represents the 31 commercial service airports in the state with Part 139 certification from the Federal Aviation Administration (FAA). As such, the CAC represents all airports that have received an Order from the RWQCBs.

Rationale for Extension

It was not until an informational hearing on March 6, 2019, that airports learned that the State Water Resources Control Board intended to investigate the presence of PFAS at airport facilities. The Order was dated March 20, 2019, however, it is not clear whether all of the letters were actually sent on this date. In many cases the Order was sent to the wrong department, delayed in receipt, or in some cases, not received at all. The timeline for completing workplans began on the date of the Order's release, so delay in receiving letters has cut into the already limited time airports have to respond to the Order. Airports who received the Order later, or not at all, need a corresponding schedule accommodation to provide equal time to undertake the Order's requirements.

In addition to delayed and unreceived Orders, airports are also concerned about the resources available to develop workplans and test for PFAS in the timeframe outlined. Most airports are public agencies, which must go through a formal multiweek public Request for Proposals (RFP) process before selecting and retaining a consultant.

Further, testing for PFAS will require coordination among multiple entities as well. For example, airports must obtain permits from local agencies before they can drill wells for testing, many airports will also have to contract with drilling companies. Progress moving forward will depend on the promptness of local agencies and availability of contractors. Availability and responsiveness of local laboratories to analyze for PFAS is limited also; if the bottleneck leaves airports to use out of state labs, additional time will be needed to identify, engage and ship to these labs.

The Order impacts all 31 airports, but the size of the facilities, activities, and airport staffing varies dramatically from the largest to the smallest airports. California has the second busiest airport in the nation, but it also has several airports that have Part 139 certification with no commercial activity. Smaller airports tend to have fewer personnel and in most cases, no dedicated environmental staff. These small airports do not have the technical expertise or training to sufficiently accomplish the work ordered by the RWQCBs. Therefore, they must rely heavily on city or county staff which are often oversubscribed and require additional technical support from outside consultants, and airport working groups.

Smaller airports simply do not have the budget available to hire a consultant and conduct testing immediately. Due to limited operating revenues, these airports must carefully budget expenditures in advance of the fiscal year. An extension will allow these airports to budget appropriately for this effort and coordinate with city and county departments if additional funding resources are necessary.

The PFAS concerns raised by the Order are new to most airports. Many are already beginning to collaborate with each other to share resources and best practices to review historic operational information, identify appropriate sampling locations, learn new sampling methods and equipment, and develop appropriate approaches to other details of the Order.

Proposed Extension Timeline

We respectfully request an extension to allow for more time for airports to conduct their public processes to retain consultants and coordinate stakeholders. All airports intend to cooperate and fully comply with the Order, however, limited resources and experience on this issue will require a heightened level of partnership throughout the industry. As such, we suggest addressing the extension timelines based on a uniform date for all airports, and airport size, which generally dictates resources and capacity to respond (See Attachment A).

We propose the following modified schedule:

| Airport Size | Effective Start Date | Work Plans Due (days after receipt of Order) ¹ | Results Due After Water Board Approval of the Work Plan ² (Days after plan accepted) |
|--------------|----------------------|---|---|
| Large-Hub | 4/1/2019 | 60 | 90 |
| Medium-Hub | 4/1/2019 | 75 | 120 |
| Small-Hub | 4/1/2019 | 120 | 150 |
| Non-Hub | 4/1/2019 | 120 | 180 |

¹ Assumes the airport has received the Order. Airports may request an additional extension if they have not received the Order by the time this letter is submitted.

² Subject to change. Airports will outline a schedule in the Work Plan and/or request a time extension if there were delays or impacts during implementation of the Work Plan.


This preferred approach provides equivalent time frames for all airports and standardizes response time considering delays in receiving the Order. Alternatively, individual schedules could be arranged for each airport that did not timely receive the Order after March 20, 2019, but this requires more time for Regional Board Staff, and will result in disparate extension periods.

The requested extension will treat all airports equally and allow time to share resources and best practices, undertake public contracting processes, coordinate with airport operations, secure competent certified labs, and enable airport staff, consultants, and labs time to undertake a properly designed investigation and produce meaningful results.

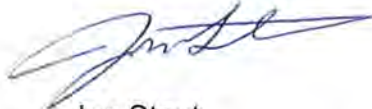
We would appreciate your prompt response to this request. Airports are working as quickly as possible to respond to the Order, but many do not expect to meet the current timeline. We strongly encourage flexibility, as the industry shares resources and approaches this effort in a collaborative manner. Feel free to email Jim Lites

(jlites@calstrat.com) and Sarah Johnson (sjohnson@calstrat.com) with any questions or comments about our requested timeline.

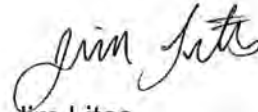
Sincerely,



Ivar Satero
CAC President



Jon Stout
CAC Vice-President



Jim Lites
CAC Executive Director

On behalf of the following airports:

Arcata/Eureka Airport (ACV)
Buchanan Field Airport (CCR)
Hollywood Burbank Airport (BUR)
Charles M. Schulz – Sonoma County Airport (STS)
Chico Municipal Airport (CIC)
Del Norte County Regional Airport, Jack McNamara Field (CEC)
Fresno Yosemite International Airport (FAT)
Imperial County Airport (IPL)
John Wayne Airport, Orange County (SNA)
Kern County Dept. of Airports – Meadows Field Airport (BFL)
Long Beach Airport (LGB)
Los Angeles World Airports (LAX)
Mammoth Yosemite Airport (MMH)
Monterey Regional Airport (MRY)
Norman Y. Mineta – San José International Airport (SJC)
Oakland International Airport (OAK)
Ontario International Airport (ONT)
Palm Springs International Airport (PSP)
Redding Municipal Airport (RDD)
Sacramento International Airport (SMF)
San Bernardino International Airport (SBD)
San Diego International Airport (SAN)
San Francisco International Airport (SFO)
San Luis Obispo County Regional Airport (SBP)
Santa Barbara Municipal Airport (SBA)
Santa Maria Public Airport (SMX)
Southern California Logistics Airport (VCV)
Stockton Metropolitan Airport (SCK)
Ventura County Airports (OXR)

ATTACHMENT A

| Airport Classifications | | Hub Type: Percentage of Annual Passenger Boardings | Common Name |
|--|---|--|--------------------------------------|
| Commercial Service: Publicly owned airports that have <i>at least</i> 2,500 passenger boardings each calendar year and receive scheduled passenger service §47102(7) | Primary: Have more than 10,000 passenger boardings each year §47102(16) | Large: 1% or more | Large Hub |
| | | Medium: At least 0.25%, but less than 1% | Medium Hub |
| | | Small: At least 0.05%, but less than 0.25% | Small Hub |
| | | Nonhub: More than 10,000, but less than 0.05% | Nonhub Primary |
| | Nonprimary | Nonhub: At least 2,500 and no more than 10,000 | Nonprimary Commercial Service |

(Source: Federal Aviation Administration – Airport Categories)

| ST | Locid | City | Airport Name | S/L | Hub |
|----|-------|-------------------------------------|--|-----|-----|
| CA | LAX | Los Angeles | Los Angeles International | P | L |
| CA | SFO | San Francisco International Airport | San Francisco International | P | L |
| CA | SAN | San Diego | San Diego International | P | L |
| CA | OAK | Oakland | Metropolitan Oakland International | P | M |
| CA | SJC | San Jose | Norman Y Mineta San Jose International | P | M |

| | | | | | |
|----|-----|-----------------|---|----|------|
| CA | SMF | Sacramento | Sacramento International | P | M |
| CA | SNA | Santa Ana | John Wayne Airport-Orange County | P | M |
| CA | BUR | Burbank | Bob Hope | P | M |
| CA | ONT | Ontario | Ontario International | P | M |
| CA | LGB | Long Beach | Long Beach /Daugherty Field/ | P | S |
| CA | PSP | Palm Springs | Palm Springs International | P | S |
| CA | FAT | Fresno | Fresno Yosemite International | P | S |
| CA | SBA | Santa Barbara | Santa Barbara Municipal | P | N |
| CA | SBP | San Luis Obispo | San Luis County Regional | P | N |
| CA | MRY | Monterey | Monterey Regional | P | N |
| CA | STS | Santa Rosa | Charles M Schulz - Sonoma County | P | N |
| CA | BFL | Bakersfield | Meadows Field | P | N |
| CA | SCK | Stockton | Stockton Metropolitan | P | N |
| CA | ACV | Arcata | California Redwood Coast-Humboldt County | P | N |
| CA | RDD | Redding | Redding Municipal | P | N |
| CA | SMX | Santa Maria | Santa Maria Public/Capt G Allan Hancock Field | P | N |
| CA | MMH | Mammoth Lakes | Mammoth Yosemite | P | N |
| CA | CCR | Concord | Buchanan Field | P | N |
| CA | VCV | Victorville | Southern California Logistics | GA | None |
| CA | CEC | Crescent City | Jack McNamara Field | CS | None |
| CA | IPL | Imperial | Imperial County | CS | None |
| CA | CRQ | Carlsbad | McClellan-Palomar | CS | None |
| CA | NKX | San Diego | Miramar MCAS (Joe Foss Field) | GA | None |
| CA | SBD | San Bernardino | San Bernardino International | GA | None |
| CA | OXR | Oxnard | Oxnard | GA | None |
| CA | CIC | Chico | Chico Municipal | GA | None |

(Source: Federal Aviation Administration – CY2017 Enplanement Data. Includes Hub classification)

Chris Hastert

From: Houser, Chuck <CHouser@scsengineers.com>
Sent: Wednesday, February 19, 2020 4:26 PM
To: Gerhart, Kelsey@Waterboards
Cc: Chris Hastert; Crosby, Christopher
Subject: Scheduling and Deadline Extension Request

Kelsey,

The fieldwork for the PFAS investigation at Santa Maria Airport is scheduled for March 24th-26th (the earliest date the drilling company was able to schedule our project). We confirmed that our selected laboratory, Vista Analytical, is on your list of ELAP certified labs for the PFAS analytical methods. They are running 3 to 4 weeks turnaround time for PFAS analysis, which would place our receipt of analytical results ideally between April 17th and April 24th. We are requesting an extension of the date of the Sampling and Analysis Report to May 31, 2020. Please let me know if you have any questions. Thank you.

Chuck

Chuck Houser, CHg
Project Manager
SCS Engineers
Office 858-571-5500 Ext. 2908
Direct: 858-583-7738
Mobile: 858-805-5523
chouser@scsengineers.com

Central Coast Regional Water Quality Control Board

December 23, 2019

Chris Hastert
General Manager
Santa Maria Public Airport District
3217 Terminal Drive
Santa Maria, CA 93455
Email: chastert@santamariaairport.com

via Electronic Mail

Dear Mr. Hastert:

**SITE CLEANUP PROGRAM: SANTA MARIA PUB/CAPT G ALLAN HANCOCK FLD,
AIRPORT ID SMX, 3217 TERMINAL DRIVE, SANTA MARIA, SANTA BARBARA
COUNTY – RESPONSE TO PFAS SAMPLING WORK PLAN AND REQUIREMENT
FOR A SAMPLING AND ANALYSIS REPORT**

Central Coast Regional Water Quality Control Board (Central Coast Water Board) staff reviewed SCS Engineers' (SCS) October 14, 2019 *PFAS Sampling Work Plan* (Workplan)¹ and December 3, 2019 email correspondence summarizing revisions made to the October 14, 2019 Workplan (December Amendment)², prepared on behalf of Santa Maria Public Airport District (Airport District). The Airport District prepared the Workplan and December Amendment in response to per- and polyfluoroalkyl substances (PFAS) investigation requirements in a March 20, 2019 State Water Resources Control Board (State Water Board) Order (WQ 2019-0005-DWQ)³ to determine if subsurface media are impacted by PFAS [e.g., from deployment of aqueous film-forming foam (AFFF)] at the Santa Maria Public Airport (Site). This letter provides Central Coast Water Board's conditional concurrence with the scope of work included in the Workplan and December Amendment provided the Airport District addresses our requirements described in this letter. Order WQ 2019-0005-DWQ requires, pursuant to Water Code section 13267, a report of findings (Sampling and

¹ See the October 14, 2019 Workplan at: <https://geotracker.waterboards.ca.gov/?url=a8447>.

² See the December 3, 2019 email correspondence summarizing revisions made to the October 14, 2019 Workplan at: <https://geotracker.waterboards.ca.gov/?url=lbvu3>.

³ See Order WQ 2019-0005-DWQ at: <https://geotracker.waterboards.ca.gov/?url=ye03f>. The original deadline for workplans was May 20, 2019; however, two-month extensions were later granted by the State Water Board.

DR. JEAN-PIERRE WOLFF, CHAIR | JOHN M. ROBERTSON, EXECUTIVE OFFICER

Analysis Report) be submitted no later than 90 days following the date of this conditional concurrence letter; the Airport District is required to submit a Sampling and Analysis Report to this office no later than **March 22, 2020**.

SCOPE OF WORK PRESENTED IN THE OCTOBER 14, 2019 WORKPLAN

In the Workplan, the Airport District proposes investigation activities and field procedures to be implemented at designated potential PFAS source areas (including AFFF storage area, fire fighter training/nozzle testing area, airplane crash site, and AFFF activation/deployment area associated with an interior hangar fire), drainage areas, and existing supply wells. The original scope of work proposed by the Airport District includes:

- The recovery of soil samples from 11 soil boring locations using a direct-push rig and hand auger.
- The recovery of groundwater samples from five soil boring locations drilled into water bearing units at the AFFF storage area, airplane crash site, and AFFF activation/deployment area associated with an interior hangar fire.
- The recovery of one surface water sample from an onsite drainage basin.
- The recovery of groundwater samples from two irrigation supply wells and three City municipal supply wells (City wells #5, #6, and #10).

CENTRAL COAST WATER BOARD COMMENTS ON WORKPLAN

As discussed with Airport District and SCS staff at the time of a site walk conducted on December 2, 2019, the proposed scope of characterization activities to be performed within the firefighter training/nozzle testing area and the airplane crash site lacks a sufficient scope of work to adequately address uncertainties associated with the AFFF deployment areas and fails to fulfill the groundwater assessment requirement of Order WQ 2019-0005-DWQ (Attachment 2, Item B.4). Central Coast Water Board staff discussed with Airport District and SCS staff, minor modifications to proposed soil characterization activities and the need for a more robust groundwater assessment to meet Order WQ 2019-005-DWQ requirements.

DECEMBER AMENDMENT

On December 3, 2019, SCS, on behalf of the Airport District, summarized revisions made to the October 14, 2019 Workplan via email correspondence to the Central Coast Water Board (December Amendment). With the submission of the December Amendment, the Airport District addressed comments received during a site inspection conducted on December 2, 2019. The Airport District's revised scope of work includes:

- The advancement of four additional soil borings in the fire fighter training/nozzle testing area; the recovery of two groundwater samples and five shallow soil samples from a depth of approximately one foot below the ground surface.
- The recovery of one additional groundwater sample (for a total of three groundwater samples) from three soil boring locations drilled into water bearing units at the airplane crash site.
- The recovery of soil samples from a depth of approximately three feet below the ground surface in specified surface drainage areas.

Central Coast Water Board staff understand SCS plans to obtain, if feasible, stabilized groundwater depth information from the three borings advanced at the airplane crash site for the purpose of performing a field evaluation of groundwater flow direction. The Airport District plans to use groundwater information recovered from the airplane crash site to direct a drilling and sampling program at the fire fighter training/nozzle testing area; the Airport District will communicate any field changes made to the conditionally approved scope of work with Central Coast Water Board staff at the time of drilling.

CENTRAL COAST WATER BOARD COMMENTS ON DECEMBER AMENDMENT

On December 16, 2019, Central Coast Water Board and SCS staff discussed minor revisions to the scope of work to be performed within the fire fighter training/nozzle testing area; the revised scope of work discussed and agreed upon at the time of the December 16, 2019 phone call complies with requirements set forth in Order WQ 2019-0005-DWQ. The revised scope of work includes the recovery of four shallow soil samples and three groundwater samples from four soil boring locations.⁴ A figure depicting the revised scope of work is available on GeoTracker.⁵

CENTRAL COAST WATER BOARD REQUIREMENTS

The Central Coast Water Board concurs with the scope of work presented in the Workplan and December Amendment provided the Airport District complies with the following:

- The Airport District must implement the revised scope of work presented in the December 3, 2019 email correspondence (December Amendment) and in accordance with revisions discussed with Central Coast Water Board staff on December 16, 2019. The Airport District must implement the revised scope of work using the sampling protocols/methodology and analytical methods specified in the October 14, 2019 Workplan.
- The Airport District must advance soil borings used to facilitate groundwater collection to first encountered groundwater or until drilling refusal is encountered due to local geologic conditions.
- The Airport District must analyze recovered groundwater samples for constituents identified in Table 2 (*Field Parameters and General Chemistry for Groundwater*) of Order WQ 2019-0005-DWQ.
- The Airport District, as indicated in Order WQ 2019-0005-DWQ and reiterated in the Workplan, must have samples analyzed by a laboratory that is accredited by the California Environmental Laboratory Accreditation Program (ELAP) to perform the analytical method for PFAS compliant with Department of Defense (DoD) Table B-15 of Quality Systems Manual (QSM), dated 2017, version 5.1 or later.

⁴ As discussed at the time of the December 16, 2019 phone call, the proposed soil boring locations may be adjusted based upon information gathered at the time of field investigation activities. SCS staff will contact Central Coast Water Board staff in the event proposed soil boring locations are adjusted in the field.

⁵ See the December 12, 2019 figure summarizing revisions made to the scope of work to be completed within the fire fighter training/nozzle testing area at: <https://geotracker.waterboards.ca.gov/?surl=zxskr>.

- The Airport District must containerize all investigation derived waste (generated during soil boring advancement, well destruction, etc.), pending analytical testing, and legally dispose of the waste.
- The Airport District must include a copy of boring logs, temporary/permanent (e.g., supply wells) well construction details (e.g., total depth, top of screen, and screen length), waste manifests⁶, and findings and recommendations for additional investigation activities if warranted.
- The Airport District must submit reports in a searchable electronic format, with transmittal letter, text, tables, figures, laboratory analytical data, and appendices in Portable Document Format (PDF) as well as in electronic data deliverable (EDD) format. The Sampling and Analysis Report and EDD must be uploaded to GeoTracker via the Electronic Submittal of Information (ESI) Portal⁷, as stipulated by California law.

The Central Coast Water Board requires the Airport District to submit a Sampling and Analysis Report by **March 22, 2020**.

LEGAL REQUIREMENTS

Order WQ 2019-0005-DWQ requires a report of findings (Sampling and Analysis Report) be submitted no later than **90 days** following the date of this concurrence letter pursuant to Water Code section 13267. Therefore, the Airport District must submit a Sampling and Analysis Report to this office no later than **March 22, 2020**. Failure to submit the Sampling and Analysis Report by March 22, 2020, may subject the Airport District to civil liability of up to \$1,000 per day for each day in which the violation occurs.

If you have questions about this letter, please contact **Kelsey Gerhart at (805) 594-6182** or kelsey.gerhart@waterboards.ca.gov or Greg Bishop at (805) 549-3132.

Sincerely,

for John M. Robertson
Executive Officer

⁶ If Investigation derived waste is analyzed and disposed of subsequent to the completion and submission of the Sampling and Analysis Report, the Airport District must submit the waste manifests to this office separately.

⁷ See link for general information and Help Desk assistance:
https://www.waterboards.ca.gov/water_issues/programs/ust/electronic_submittal.

cc (via email):

Mr. Ric Tokoph, Santa Maria Public Airport District, rtokoph@santamariaairport.com

Mr. Chuck Houser, SCS Engineers, chouser@scsengineers.com

Mr. Austin Bailey, SCS Engineers, abailey@scsengineers.com

Mr. Christopher Crosby, SCS Engineers ccrosby@scsengineers.com

Mr. Matthew Keeling, Central Coast Water Board, matthew.keeling@waterboards.ca.gov

Mr. Greg Bishop, Central Coast Water Board, greg.bishop@waterboards.ca.gov

Ms. Kelsey Gerhart, Central Coast Water Board, kelsey.gerhart@waterboards.ca.gov

R:\RB3\Shared\SCP\PFAS\SMA Airport\2019_12 Santa Maria Airport_PFAS WP Response_Conditional
Concurrence.docx

GeoTracker ID: T10000012770

CR# none

ELEVENTH AMENDMENT OF LEASE

RE: Land Lease dated August 22, 2002 between SANTA MARIA PUBLIC AIRPORT DISTRICT and RAUL MICHEL covering 226.69 acres at Santa Maria Public Airport (the "Lease")

The undersigned SANTA MARIA PUBLIC AIRPORT DISTRICT ("District") and RAUL MICHEL ("Tenant") do hereby agree to amend the above-referenced Lease effective February 27, 2020, as follows:

1. Effective June 1, 2020, the Premises are decreased by 107 acres for grazing livestock, the remaining Premises will consist of approximately 91.27 acres as shown on Exhibit "A-4".

All of the terms, covenants, conditions, provisions and agreements of said Lease, as amended, shall remain in full force and effect.

Dated: February 27, 2020

SANTA MARIA PUBLIC AIRPORT DISTRICT

Approved as to content for District:

General Manager

By: _____
Chuck Adams, President

Approved as to form for District:

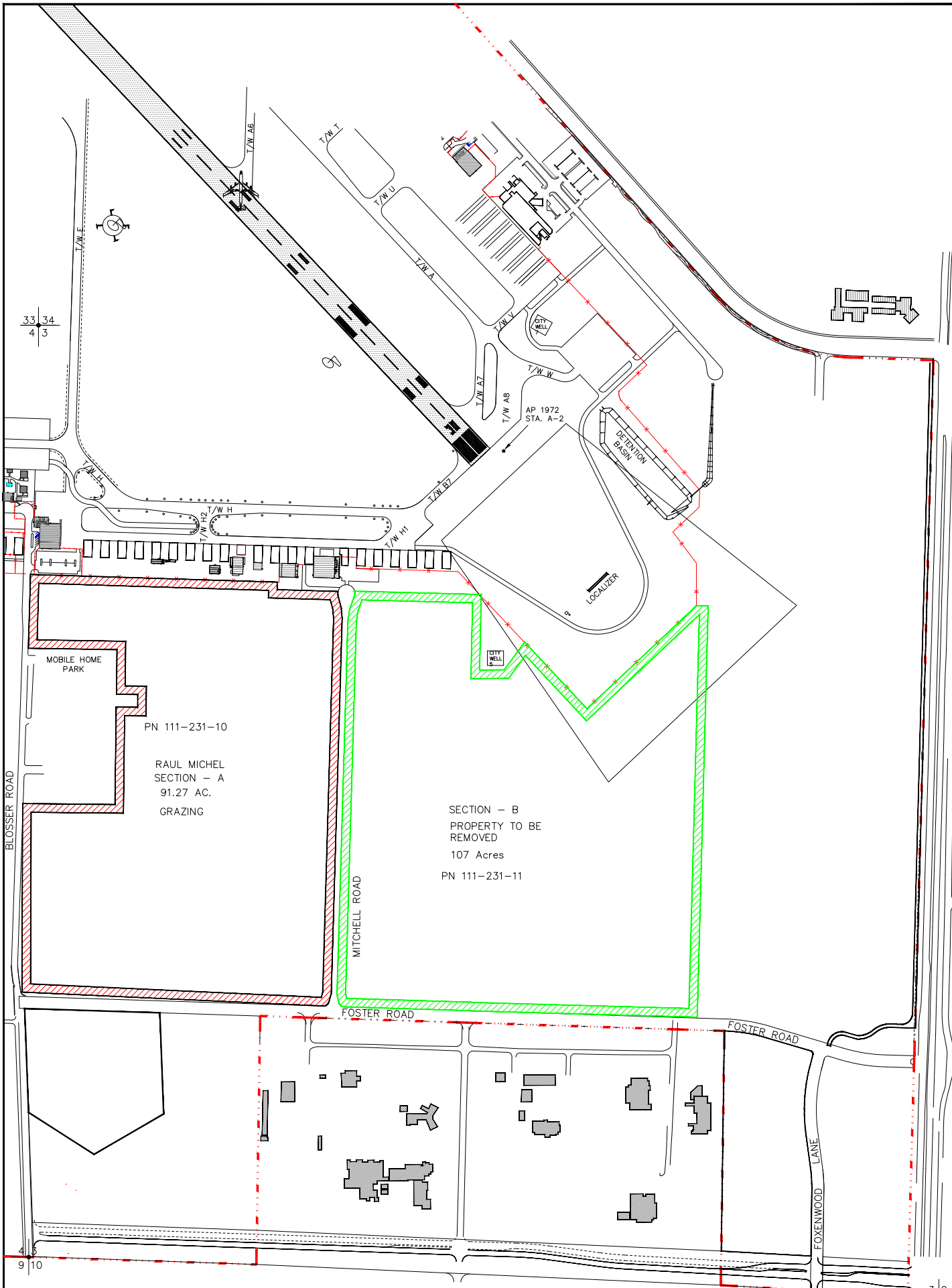
By: _____
Hugh Rafferty, Secretary


District Counsel

TENANT:

Raul Michel

G:\Drawings\AutoCad\LEASES\MICHEL.dwg, 2/27/2020 9:52:49 AM, AutoCAD PDF (High Quality Print).pc3



| | | | | | | | | |
|---|--|-----------|-----|------------------------|----------------------------|-------------------------|-------------------------|--|
| TOTAL ACRES 213.01 | | | | | | | 3/2 | |
|  | 3217 TERMINAL DR. SANTA MARIA, CA 93455. (805) 922-1726 | REVISIONS | | DRAWN BY: RAY HEATH | EXHIBIT "A-4" 2/27/2020 | MICHEL GRAZING LEASE | DRAWING | |
| | | DATE | BY: | | | | MICHEL GRAZING LEASE | |
| | | 8/3/16 | RH | | | | 1 OF 1 | |
| | | | | | | | | |

EIGHTEENTH AMENDMENT OF LEASE

Re: Land Lease (Farming) dated April 13, 2000, commencing retroactively on April 1, 2000 between SANTA MARIA PUBLIC AIRPORT DISTRICT and CJJ FARMING, a California corporation, covering land at the Santa Maria Public Airport, as extended ("Lease")

The undersigned, SANTA MARIA PUBLIC AIRPORT DISTRICT, ("District") and CJJ FARMING, a California corporation ("Tenant") do hereby agree to amend the above-referenced Lease effective June 1, 2020, as follows:

1. The Premises is increased by 107 acres, from 140.8 acres to a total of 247.8 acres. The additional 107 acres are depicted on Exhibit "A" dated February 27, 2020, attached and incorporated by this reference.

All of the terms, covenants, conditions, and provisions and agreements of said Lease, as amended, shall remain in full force and effect.

Dated: January 23, 2020

Approved as to content for District:

SANTA MARIA PUBLIC AIRPORT
DISTRICT

General Manager

Chuck Adams, President

Approved as to form for District:

Hugh Rafferty, Secretary

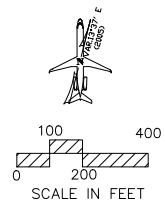
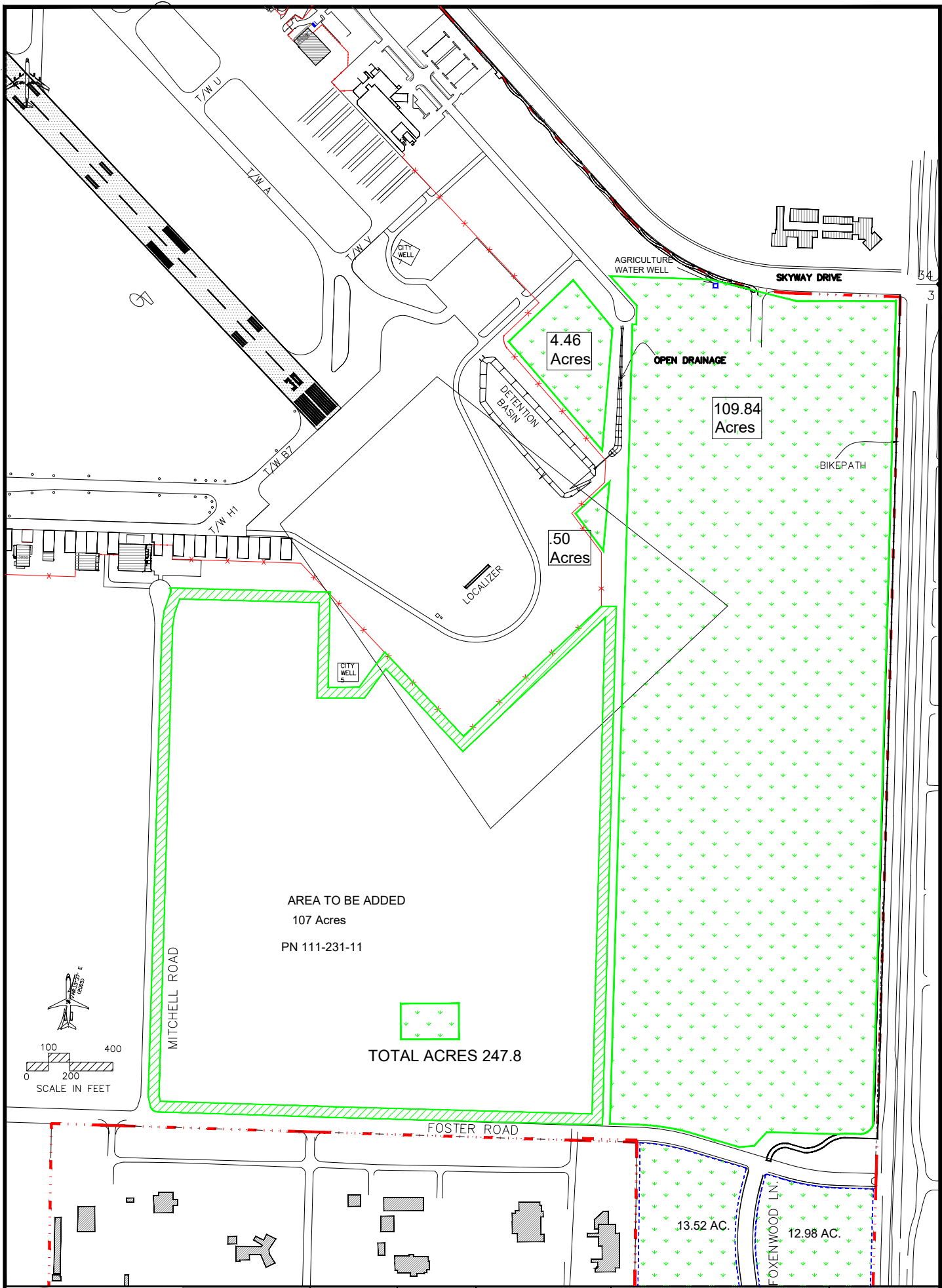
District Counsel

CJJ FARMING, a California corporation

Juan Cisneros, General Manager

Jesus Cisneros, Secretary

G:\Drawings\AutoCad\LEASES\CJJ FARMING.dwg, 2/27/2020 10:07:27 AM, AutoCAD PDF (High Quality Print).pc3



THIRD AMENDMENT OF LEASE

RE: Land Lease (Farming) dated September 1, 2010 between SANTA MARIA PUBLIC AIRPORT DISTRICT and GRESSER, INC., a California corporation, covering land at the Santa Maria Public Airport (the "Lease").

The undersigned SANTA MARIA PUBLIC AIRPORT DISTRICT ("District") and GRESSER, INC., a California corporation ("Tenant") do hereby agree to amend the Lease effective February 27, 2020, as follows:

1. The Premises is increased by 157.8 acres, from 446.88 acres to a total of 604.68 acres. The additional 157.8 acres are depicted on Exhibit "B-1" dated January 21, 2020, attached and incorporated by this reference.

2. Tenant acknowledges that the addition 157.8 acres are located within the secure Airport Operations Area (AOA). All operations and personnel in this area are subject to security requirements designated by the airport and subject to review and approval by the Transportation Security Administration. Tenant may make improvements including installation of fencing to reduce the security requirements for this additional area, such improvements must be submitted to District for review, written approval prior to construction

All of the terms, covenants, conditions, provisions and agreements of said Lease, as amended herein, shall remain in full force and effect.

Dated: February 27, 2020

DISTRICT:

APPROVED AS TO CONTENT
FOR DISTRICT:

SANTA MARIA PUBLIC AIRPORT DISTRICT

General Manager

CHUCK ADAMS., President

APPROVED AS TO FORM
FOR DISTRICT:

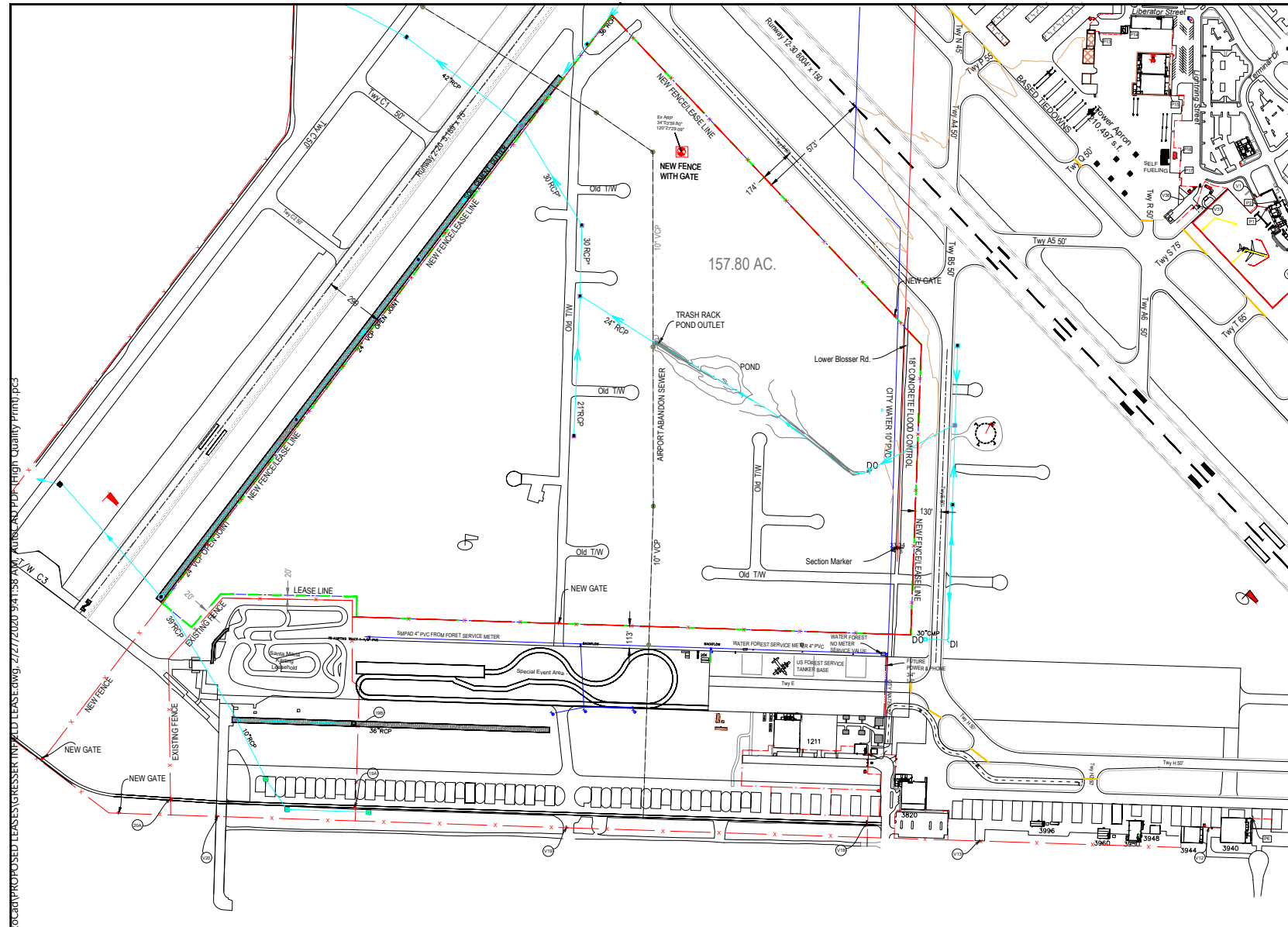
HUGH RAFFERTY, Secretary

District Counsel

TENANT:

GRESSER, INC., a California corporation

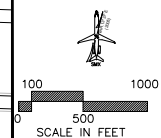
President



3217 TERMINAL DRIVE
SANTA MARIA, CA 93455
(805) 922-1726

EXHIBIT B-1

ADDITIONAL
INFIELD AGRICULTURE
157.80 AC.



| | | |
|--|-----|-------|
| DATE UPDATED | BY: | NOTES |
| 12/12/16 | RH | |
| | | |
| | | |
| Drawn By: M/ 26/ 2020 Drawn By: Kae/Kae/kae | | |
| DRAWING | | |
| INFIELD LEASE | | |
| 1 OF 1 | | |



AIRSPACE

AGENDA

- Introductions & Overview
- Airspace Technology - Detection, Identification & Mitigation
- Airspace Galaxy
- Case Studies
- Package Options
- Summary & Next Steps



ABOUT AIRSPACE SYSTEMS INC.

- Airspace specializes in end-to-end long-range drone detection and mitigation
- Founded in 2015 by experienced Silicon Valley technology veterans
- \$30M in Research & Development
- Investors include leading Silicon Valley venture capitalists
- Founding member of U.S. FAA's Drone Advisory Committee
- Engaged with the U.S. Military, Law Enforcement, and Major League Baseball, among others, to protect people, property and critical infrastructure





**U.S. FAA DRONE ADVISORY
COMMITTEE FOUNDING
MEMBER**

RESPONSIBLE FOR NEW DRONE
RULES AND REGULATIONS IN THE
UNITED STATES

DIFFERENT DRONE TYPES REQUIRE LAYERED SENSORS

Single-sensor detection systems are not sufficient to meet the variety of different UAS technologies on the market, threats, scenarios, concept of operations, etc. Therefore Airspace recommends a layered sensor approach to counter the threat



Data Link

Waypoint
Navigation via
GPS

Signal Emitting



Remote Control

Waypoint
Navigation via
GPS

Signal Emitting



Pre-programmed

Waypoint
Navigation via
GPS/Inertial Nav

No Signal

SPECIFICATIONS OF TYPICAL SENSORS

| Hardware | Detected Drones / Frequencies | Information Provided | Range |
|-------------|--|---|--------------------------------------|
| RF Sensor 1 | Detects DJI drones (Phantom, Inspire, Mavic, Spark) | <ul style="list-style-type: none">- 3D drone location- Home location (typically operator location)- Drone model & serial number | 8 km or 40 km (two options) |
| RF Sensor 2 | Detects signals from 1.3 GHz to 6 GHz (20 MHz to 1.3 GHz available with add-on) Primary purpose is for non-DJI drones when RF Sensor 1 is installed | <ul style="list-style-type: none">- 3D drone location when combined with radar- Drone model if signal is in the library- Operator location area when the sensor nodes have line of sight to the operator (level of accuracy varies up to a one-block area) | 4 km |
| Radar | Detects all airborne objects Primary purpose is for non-signal emitting drones when RF Sensors are installed | <ul style="list-style-type: none">- 3D location of airborne object (leverage AI and optical to determine probability that it's a drone) | 6 km |
| Optical | Optical confirmation of detected drones for threat assessment | <ul style="list-style-type: none">- Automated slew-to-cue for all drone detections- Leverages Airspace's AI to find & focus on the drone- Existing camera infrastructure can be leveraged / Cameras can be used for other infrastructure surveillance when not detecting drones | 1 km or 2.5 km (range of options) |

AIRSPACE TECHNOLOGY

Airspace uses artificial intelligence, machine vision, and advanced robotics to ensure airspace security against unauthorized or malicious drones. Only Airspace's solutions deliver on all four critical airspace security requirements:

- Long-range detection
- Instant identification
- Autonomous capture
- Safe removal



AIRSPACE GALAXY™ DETECTION & ID



LONG-RANGE DETECTION



AUTONOMOUS CAPTURE



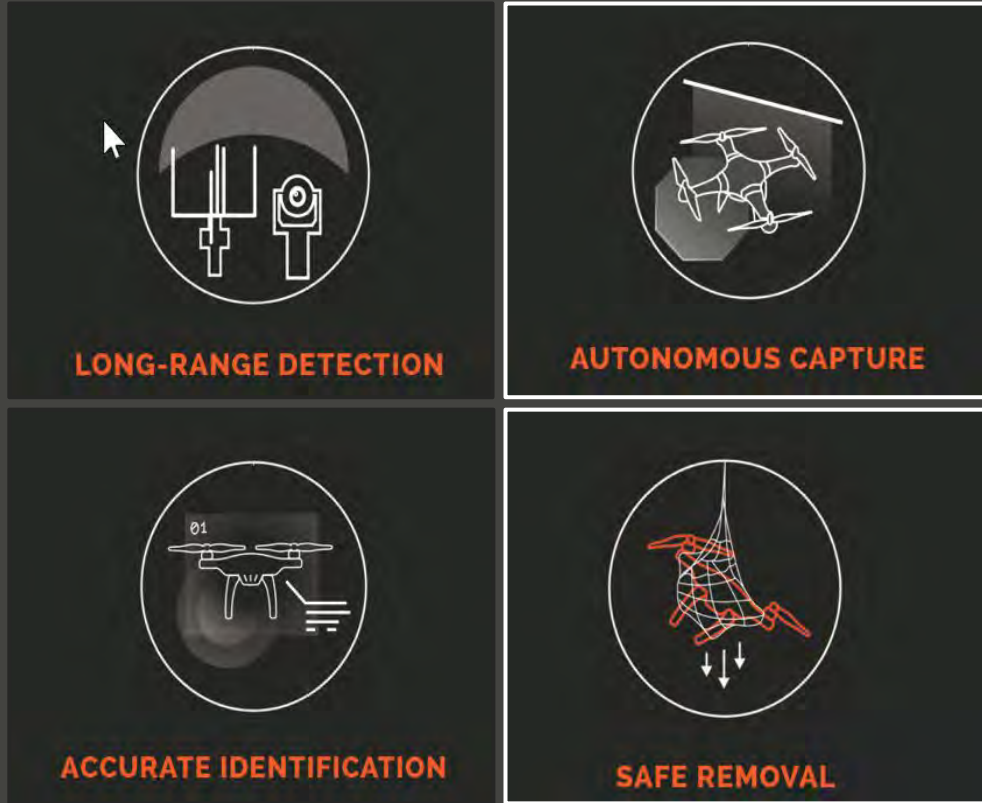
ACCURATE IDENTIFICATION



SAFE REMOVAL

- Advanced sensors for full situational awareness (Radio Frequency, Radar, Optical)
 - Detection up to 25+ miles
 - Drone type and serial number
- Drone and operator location / operating zone for signal-emitting drones
- Low false alarms
- Airspace Galaxy™ solution is upgradable for additional threat and **mitigation ready** for drone disable and containment

AIRSPACE MITIGATION

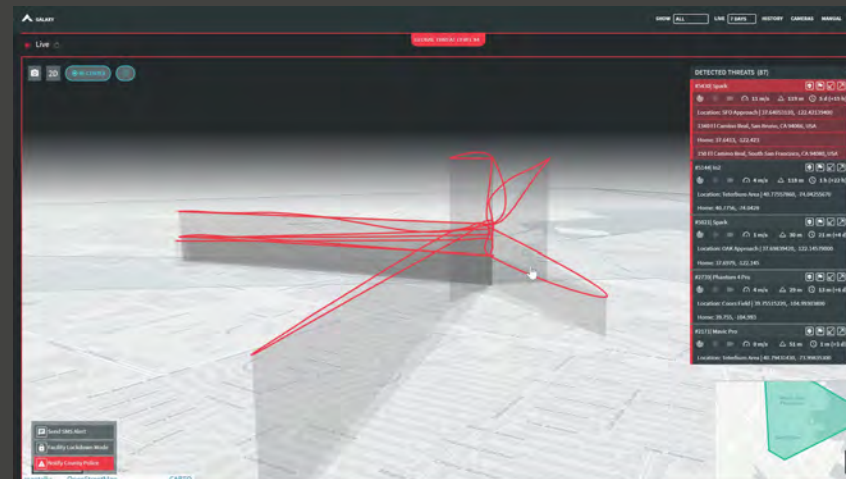
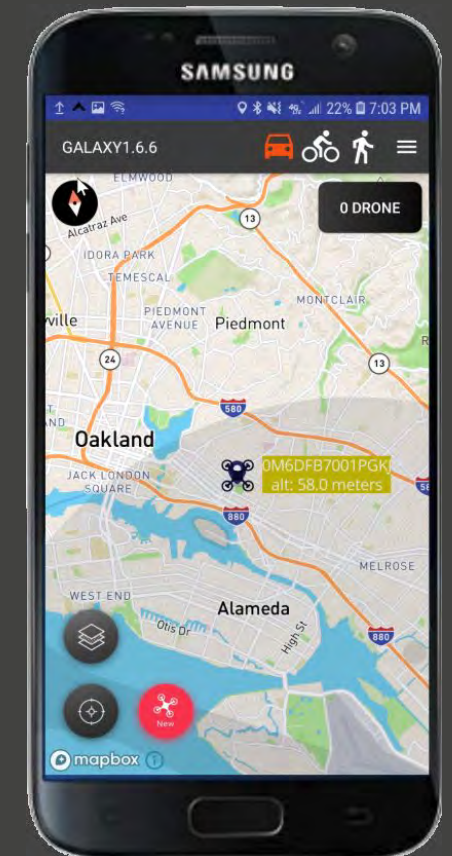


- Autonomous, drone-threat removal system
 - Artificial Intelligence (AI) Pilot
 - Computer Vision
 - Deep Learning
- On-board “supercomputer” identifies, tracks, and intercepts intruding drones
- Autonomous capture and safe removal prevents collateral damage
- Identify, Document, and Preserve evidence from captured drones



AIRSPACE GALAXY™ CONOPS

- Airspace Galaxy integrates into your concept of operations (CONOPS)
- Alerts based on your customized parameters (e.g., geographic borders)
 - Delivery methods include mobile app, email, text
 - Alerts can be integrated into existing security systems
- Detection information can be shared with local authorities
- Web-based and mobile applications



THREAT WINDOW

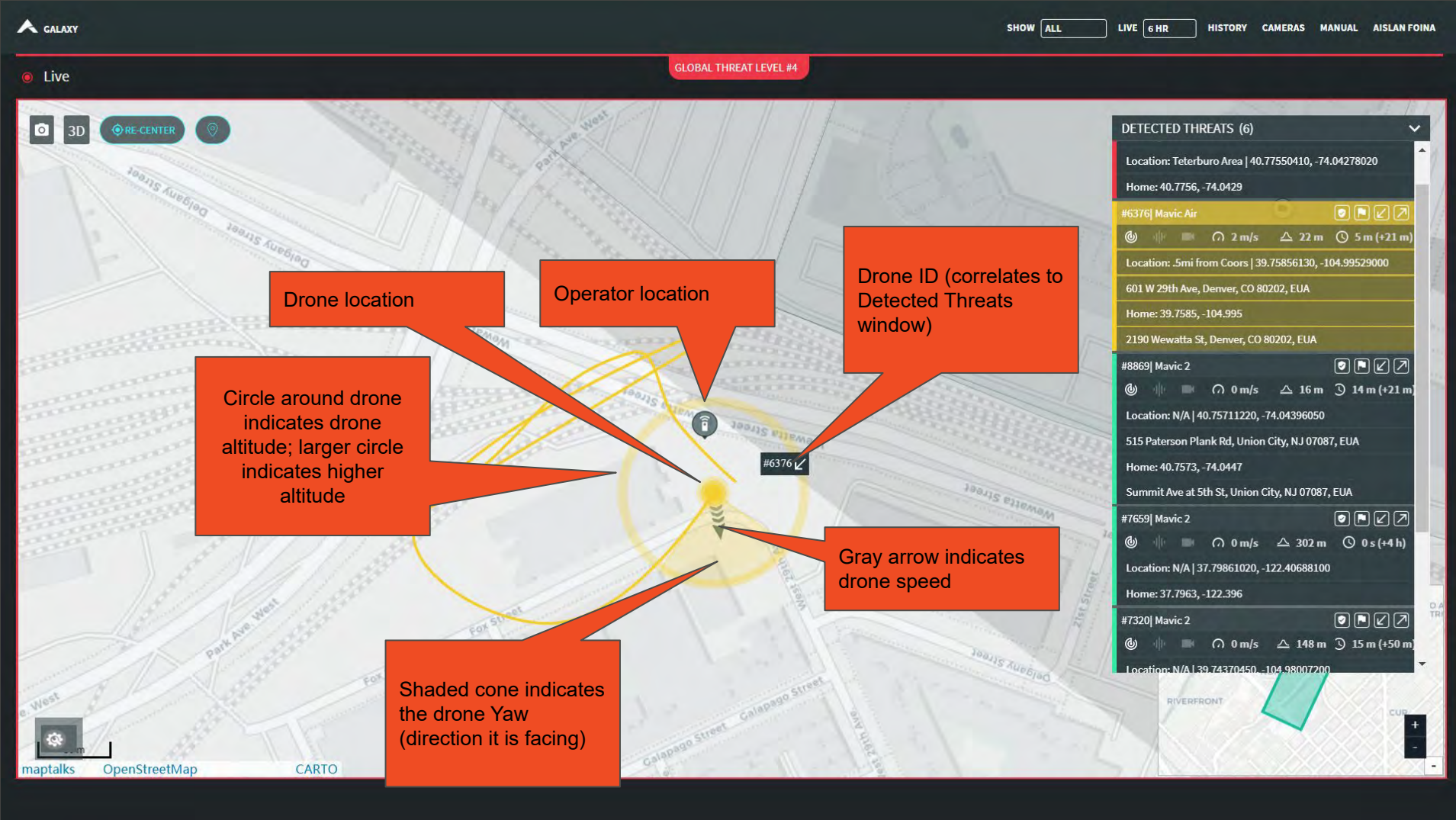
The screenshot displays the 'DETECTED THREATS (9)' window. The first entry is highlighted in red and labeled '#3209| Mavic Pro'. The interface includes several callouts explaining the data and controls:

- Color is the threat level**: Points to the red background of the threat entry.
- Galaxy generated ID number**: Points to the ID '#3209'.
- Drone type**: Points to the drone model 'Mavic Pro'.
- Mark as friendly / no threat**: Points to the shield icon.
- Flag - brings to top of the stack**: Points to the flag icon.
- Manually raise/lower threat level**: Points to the up/down arrow icons.
- Duration of contact (+time since last contact)**: Points to the clock icon and the text '1 m (+9 h)'.
- Speed**: Points to the speed indicator '2 m/s'.
- Altitude**: Points to the altitude indicator '23 m'.
- Drone Position (to nearest address)**: Points to the location text 'Location: OAK Approach | 37.71032890, -122.15100400'.
- Operator Position**: Points to the home address 'Home: 37.7105, -122.15100400'.

The interface also shows a list of addresses: '610 Aladdin Ave, San Leandro, CA 94577, EUA' and '601 Aladdin Ave, San Leandro, CA 94577, EUA'.

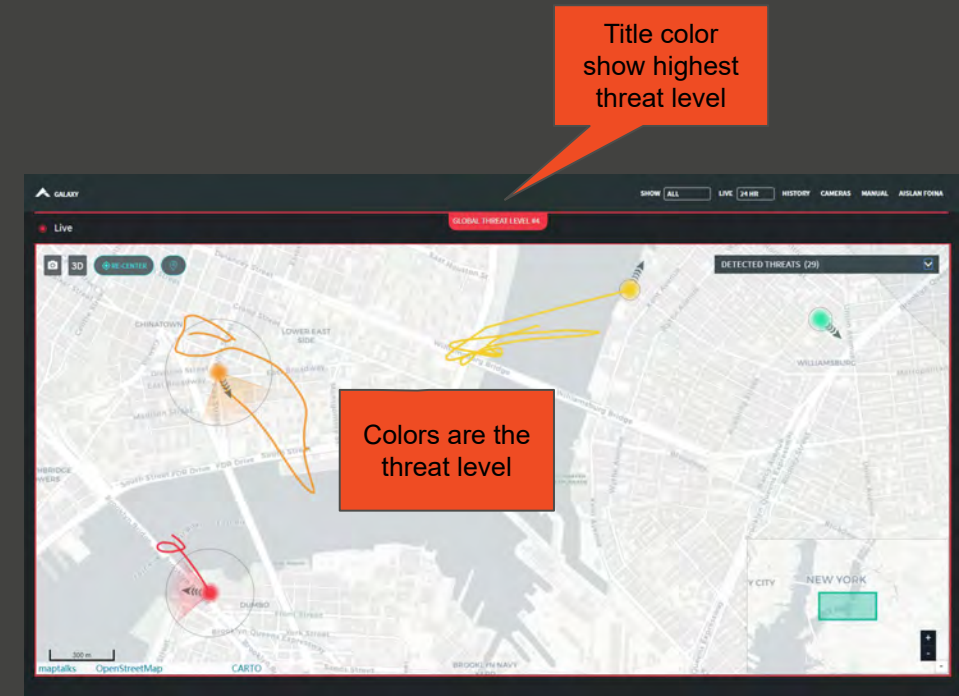


DRONE FLIGHT DETAILS



GALAXY INTERFACE - THREAT

- Galaxy classify detections into threat levels
 - Not a threat
 - Low threat
 - Medium threat
 - Highest threat
- Threat assessment depends on customer requirements and local regulation
 - Detection in an airport approach path is set to max threat
- Threat can be escalated or reduced manually by the operator



TRUSTED TO PROTECT FLEET WEEK

Fleet Week 2018, San Francisco CA

- Airspace coordinated with SFPD and US Navy to detect and identify unauthorized drones around San Francisco Bay
- Detected **34** unique drones over a two day period
- Law enforcement dispatched 4 times, multiple drone operators detained for illegal operations



The choice of the



to protect 2018 World Series



TRUSTED TO PROTECT THE WORLD SERIES

MLB 2018 World Series, Dodgers Stadium (Los Angeles, CA) and Fenway Park (Boston, MA)

- Drone detection & airspace visualization services
- Detected **59** unique drones/operators between the two cities
- Enabled law enforcement to pursue operators, including an operator flying over a stadium during game time



We Protect the Protectors.
US Army Contract of Record



U.S.ARMY

Package Options - Subscription Model (SaaS)

| REGIONAL DATA COLLECTION PACKAGE | PILOT PROGRAM | STANDARD PACKAGE | ADVANCED PACKAGE |
|--|---|---|---|
| <ul style="list-style-type: none"> Airspace to collect day for a 3 day period around the airport Provide a report on the drone detection activity for the 3 days to include operator and drone location (live links); drone ID; speed and more | <ul style="list-style-type: none"> 45-Day on-site deployment Full airport for DJI drones Strategic airport coverage for other signal emitting drones | <ul style="list-style-type: none"> Detection of all DJI drones Real time drone detection alerts on drone ID; Drone Address; Model; Speed; location and more | <ul style="list-style-type: none"> Detection and identification of signal emitting drones Detection of all DJI drones |
| <p>No Hardware Required</p> <p>Airspace Galaxy™ solution integrates signals from the hardware with AI and ML to create actionable intelligence</p> | <p>Hardware: Aeroscope and cameras</p> <p>Airspace Galaxy™ solution integrates signals from the hardware with AI and ML to create actionable intelligence</p> | <p>Hardware: G16 Aeroscope, cameras</p> <p>Airspace Galaxy™ solution integrates signals from the hardware with AI and ML to create actionable intelligence</p> | <p>Hardware: G 16 Aeroscope,Radar, short-range cameras</p> <p>Airspace Galaxy™ solution integrates signals from the hardware with AI and ML to create actionable intelligence</p> |
| Price: \$7,500 | Price: \$35,000 | Price: \$99,000 Annual Subscription Price | Price: \$500K-900K (price will depend on choice of HW) Annual subscription price |

SUMMARY AND NEXT STEPS

- Airspace Differentiators:
 - **Complete Coverage**
 - Layered sensors to cover the full drone threat
 - Integrated into a single, easy to use UI
 - **Actionable Intelligence** - Innovative AI & ML
 - **Seamless Integration** with Existing Operations
 - **Speed** - Install equipment and software in days not weeks or months
 - **Flexible investment** - Subscription basis
- Next Steps - Select Package of your choice



Proposed Cost Elements

Proposal: 1 University System
Customer: Santa Maria Airport

Hosted Server
V#1

Date: 2/12/2020
Estimator: Mark Larson

PROPOSED COST ELEMENTS - SUMMARY

| Cost Element | Initial End User Cost |
|---|-----------------------|
| Mobile University LPR and Professional Services | \$ 24,005.00 |
| Mobile Computing Package | \$ 5,000.00 |
| Hosted Server (AutoVu Managed Services) - Annual Cost | \$ 4,200.00 |
| Mobile Assurance Support - Annual Cost | \$ 4,350.00 |
| LPR Equipment Costs and Services- Total | \$ 37,555.00 |

*** This proposal does not account for sales tax

| **Options** | End User Cost |
|---|---------------|
| Genetec AutoVu Extended Warranty Upgrade warranty to cover years 2-5 | \$ 6,272.64 |
| Genetec AutoVu Extended Warranty with Advanced Swap Option-Include Advanced Swap option for years 1-5 | \$ 8,191.26 |

| **Annual Cost ** | End User Cost |
|--|---------------|
| Annual cost to include PCS Mobile support services and Genetec Licenses. | \$ 8,550.00 |



Proposed Solution

Proposal: 1 University System
 Customer: Santa Maria Airport
 Date: 12-Feb-20
 Estimator: Mark Larson

Costs - Mobile LPR

| Item Number | Item | Item Description | Quantity | Unit Cost | Extended Cost |
|--|---|--|----------|--------------|---------------------|
| AutoVu Hardware | | | | | |
| AU-K-U2XS-850 | AutoVu SharpX University Dual Base Kit | AutoVu™ SharpX UNIVERSITY-ESSENTIALS new MLC* engine included Dual base KIT includes main processing unit, hard mount brackets, wiring, GPS antenna, high resolution LPR units and in-vehicle license. | 1 | \$ 14,805.00 | \$ 14,805.00 |
| Vehicle Software | | | | | |
| AU-M-OFFLINEMAP-NA | Mapping License | Including data for North America - Per vehicle license | 1 | \$ 450.00 | \$ 450.00 |
| Professional Services | | | | | |
| LPR-SVC-INS-M | Mobile Installation | Installation services for one mobile LPR vehicle (City w/out WI, University, MLPI, Law 3 Camera) | 1 | \$ 1,500.00 | \$ 1,500.00 |
| LPR-SVC-CFG-AMS | Security Center Installation and Configuration | Initial Setup/ Base Configuration of Genetec SC back end server (AMS) and base Permit Zone Configuration (up to 50 lots). Base configuration includes PaybyPlate Sync Integrations (up to 5 providers), Hotlist/Permit List Updater and mapping of up to 50 locations. | 1 | \$ 2,500.00 | \$ 2,500.00 |
| LPR-SVC-PM | Project Management Services | Project Management services for LPR Project deployment. This assumes deployment of 5 or less mobile LPR vehicles or 1 fixed LPR garage. | 1 | \$ 1,500.00 | \$ 1,500.00 |
| LPR-SVC-TRAIN-M | On-Site and Remote Training | On Site and Remote LPR Training completed in two phases: Phase 1: One (1) 4 hours On Site Training Session on LPR Mobile Vehicle software and hardware (up to five people may attend training session) Phase 2: One (1) 2 hour remote web based training on LPR Security Center back end software -Security Desk and Config Tool (up to 10 participants). Additional training can be provided for additional cost. | 1 | \$ 1,200.00 | \$ 1,200.00 |
| LPR-SVC-TRAVEL | Travel Charge for On Site Services | Travel Costs for on site installation services- QTY based on project scope- up to 1 week on site with travel occurring M-F. Additional travel cost for larger deployments, extremely remote locations or weekend travel. | 1 | \$ 1,400.00 | \$ 1,400.00 |
| PS-AV-AMS-SC-NA | AutoVu Managed Services Setup Fee | Autovu Managed Services Setup Fees. (Includes: Creation of hosted environment, Security Center installation and preliminary Security Center setup) Security Center configuration included. | 1 | \$ 500.00 | \$ 500.00 |
| Shipping | | | | | |
| Ship-US | Shipping | Shipping to Lower 48 States | 1 | \$ 150.00 | \$ 150.00 |
| LPR Equipment Costs and Services- Total | | | | | \$ 24,005.00 |

Costs - Warranty Options

| Item Number | Item | Item Description | Quantity | Unit Cost | Extended Cost |
|--|---|---|----------|-------------|-----------------|
| Extended Warranty Options - Mobile LPR | | | | | |
| AU-K-UXX-EWUP-1Y | First Year Upgrade Extended Warranty for Mobile Kit | AU-K-UXX- advanced swap warranty service upgrade from return and repair for first year of sale. | 1 | \$ 445.50 | \$ 445.50 |
| AU-K-UXX-EWAS-4Y | Four Years Advance Swap Warranty - Covers years 2 - 5 | Extended Warranty for AU-K-UXX kit with Advance Replacement coverage - 4 Years additional coverage. Does not Include update to advanced replacement for year 1 (warranty cannot extend past 5th year after purchase). This includes coverage of AutoVu™ vehicle hardware, Genetec Patroller™ software upgrades and Benomad updates. Does not cover in-vehicle PC. | 1 | \$ 7,745.76 | \$ 7,745.76 |
| Extended Warranty Options Total | | | | \$ | 8,191.26 |
| Extended Warranty Options - Return and Repair Fixed LPR | | | | | |
| AU-K-UXX-EWRR-4Y | Extended Warranty Return and Repair Coverage - Years 2 - 5 | Extended Warranty for AU-K-UXX kit with Return and Repair coverage - 4 Years additional coverage. (warranty cannot extend past 5th year after purchase). This includes coverage of AutoVu™ vehicle hardware, Genetec Patroller™ software upgrades and Benomad updates. Does not cover in-vehicle PC. | 1 | \$ 6,272.64 | \$ 6,272.64 |
| Extended Warranty Options - Return and Repair Total | | | | \$ | 6,272.64 |



Proposed Solution

Proposal: 1 University System
 Customer: Santa Maria Airport
 Date: 12-Feb-20
 Estimator: Mark Larson

Costs - Computing (mobile)

| Item Number | Item | Item Description | Quantity | Unit Cost | Extended Cost |
|-------------------------------|----------------------------------|---|----------|-------------|--------------------|
| Hardware | | | | | |
| LPR-VEH-KIT-CP | Mobile Computing Assembly | Mobile LPR Vehicle In Vehicle Computing Hardware Kit: Includes FZ-G1 Tablet, External Cradlepoint In vehicle Modem for wireless connectivity, Tablet Docking Station, vehicle antenna, vehicle hardware mounting for secure installation of tablet and docking station within vehicle. *Customer is responsible for providing activated SIM card for cell service | 1 | \$ 5,000.00 | \$ 5,000.00 |
| Hardware Costs - Total | | | | | \$ 5,000.00 |



Proposed Solution

Proposal: 1 University System
 Customer: Santa Maria Airport
 Date: 12-Feb-20
 Estimator: Mark Larson

Costs - Hosted Server

| Item Number | Item | Item Description | Quantity | Unit Cost | Extended Cost |
|--|-----------------------------|--|----------|-------------|--------------------|
| AutoVu Managed Services - Hosted Server | | | | | |
| GSC-Base-5.8 | Base Software | Genetec Security Center (GSC) Base Package - Version 5.8 which includes: 1 Directory, 5 Security Desk client connections (incl. Web Client), Plan Manager Basic, Alarm Management, Advanced Reporting, System Partitioning, Zone Monitoring, IO Modules Support, Email Support, Macros Support (actual macros sold separately), Support for server virtualization, all supported languages. Must purchase a SynergisTM, OmnicastTM, or AutoVuTM base package to enable access control, video, or LPR content respectively. | 1 | \$ - | \$ - |
| GSC-PBPSYNC-UPG-MULTI | Pay By Plate Multi | Upgrade to multiple Pay by Plate systems. PBP Single required | 1 | \$ 300.00 | \$ 300.00 |
| GSC-Av-MS2.0-1Y | AMS - 1 Year | GSC AutoVu Managed Service 2.0 for one (1) year. Maximum of 1 year Hit retention (with images) and 1 year read retention (without images). See product description for limitations. Max five (5) concurrent Security Desk connections. Includes: AutoVu base, Security Center mapping, List Updater and Pay-by-Plate Single. Includes Genetec Advantage | 1 | \$ 3,600.00 | \$ 3,600.00 |
| GSC-Av-MS-1Patroller-1Y | Patroller Connection | GSC AutoVu Managed Service 1 Patroller | 1 | \$ 300.00 | \$ 300.00 |
| Server Costs - Total | | | | | \$ 4,200.00 |



Proposed Solution

Proposal: 1 University System
 Customer: Santa Maria Airport
 Date: 12-Feb-20
 Estimator: Mark Larson

Costs - Annual Support

| Item Number | Item | Item Description | Quantity | Unit Cost | Extended Cost |
|------------------------------------|--|--|----------|-------------|--------------------|
| Mobile Assurance Support | | | | | |
| LPR-SUP-MOB | Mobile Assurance® Mobility Summit | PCS Mobile Assurance Support for Mobile LPR Patroller vehicle. Includes remote services and remote support via Phone, Email and Remote sessions to resolve issues involving Mobile LPR vehicle. *Annual Cost per vehicle | 1 | \$ 250.00 | \$ 250.00 |
| LPR-SUP-BACKEND | Mobile Assurance® Summit Server | PCS Mobile Assurance Support for Security Center back end. Includes remote services and remote support via Phone, Email and Remote sessions to resolve issues involving back end Security Center Software. *Annual Cost per server system | 1 | \$ 2,500.00 | \$ 2,500.00 |
| LPR-PM-MOB | Preventative Maintenance | Annual on site Mobile LPR preventative maintenance visit. Includes maintenance checks, software upgrades, checking of all connections, mounting hardware for and testing in car software. Includes making any adjustments for items resulting from general wear and tear. Does not include movement of essential hardware or hardware damaged outside standard day to day use. *This is a per vehicle cost. | 1 | \$ 200.00 | \$ 200.00 |
| LPR-PM-TRAVEL | Travel Charge for On Site Services | Travel cost for on site preventative maintenance. This is a per trip cost. Additional travel cost may be required for larger deployments or remote locations. | 1 | \$ 1,400.00 | \$ 1,400.00 |
| LPR Support Services- Total | | | | | \$ 4,350.00 |



Terms of Sale

Please read these Terms of Sale (the "Terms of Sale") carefully. The submittal of any purchase order by the customer ("Buyer"), referred to in the attached quote, to Portable Computer Systems, Inc., dba: PCS Mobile ("PCS" or "Seller") indicates acceptance of these terms and conditions. Except where indicated otherwise, these terms and conditions shall supersede any subsequent terms or conditions included with any purchase order. PCS reserves the right to make changes to these terms and conditions at any time. In the event that there is any conflict or inconsistency between these Terms of Sale and any other terms of sale or use that appear on the PCS website (the "Website Terms"), these Terms of Sale will govern.

1. Acceptance of Order

Buyer's placement of an order does not necessarily ensure that we will accept the Buyer's order. We reserve the right to refuse any order in our sole discretion. In addition, before accepting Buyer's order, we may require additional information if Buyer has not provided all of the information required by Seller to complete Buyer's order. Once a properly completed order is received, authorization of Buyer's form of payment is received and we have accepted Buyer's order, we will promptly place Buyer's order in line for shipment.

Once an order has been accepted by PCS, it cannot typically be cancelled. If an order cancellation request is received and accepted by PCS prior to product shipment, a 15% cancellation fee will apply.

2. Pricing and Availability

All prices for products (and the associated costs of shipping and tax) are shown in U.S. dollars. All items are subject to availability and we reserve the right to impose quantity limits on any order, to reject all or part of an order, and to discontinue products without notice, even if Buyer has already placed an order. All prices are subject to change without notice, and Buyer agrees that taxes may be adjusted from the amount shown on this quote. Several factors may cause this, such as variances between processor programs and changes in tax rates.

3. Payment Terms

Buyer shall provide all financial information reasonably requested by PCS from time to time for the purpose of establishing or continuing Buyer's credit limit. Buyer agrees that PCS shall have the right to decline or extend credit to Buyer and to require that the applicable purchase price be paid prior to shipment. PCS shall have the right from time to time, without notice, to change or revoke Buyer's credit limit on the basis of changes in PCS's credit policies or Buyer's financial condition and/or payment record.

If credit terms are not available to the Buyer, pre-payment may be made by ACH (EFT), Wire Transfer or company check (7 – 10 days to clear). PCS currently accepts Visa, MasterCard, American Express and Discover as forms of credit card payment. By submitting Buyer's order and selecting to use a credit card as a form of payment, Buyer represents and warrants that Buyer is authorized to use the designated credit card and authorizes Seller to charge Buyer's order (including taxes, shipping and handling) to that card. If the card cannot be verified, is invalid, or is otherwise not acceptable, Buyer's order may be suspended or cancelled automatically. All credit card orders are subject to a 4% service charge. PCS further reserves the right, in its sole discretion, to request partial payment from Buyer, prior to processing Buyer's order.

Buyer shall not deduct any amounts from any PCS invoice without PCS's express written approval, which approval shall be contingent upon Buyer providing all supporting documentation for such deduction as required by PCS. Any authorized deductions for returned Products must include Buyer's customer tracking number and PCS's Return Merchandise Authorization ("RMA") number. Deductions received by PCS without advance notice will be denied.

If Buyer fails to make timely payment of any amount invoiced by PCS, PCS shall have the right, in addition to any and all other rights and remedies available to PCS at law or in equity, to immediately revoke any or all credit extended, to delay or cancel future deliveries and/or to reduce or cancel any or all quantity discounts extended to Buyer. Buyer shall pay all costs of collection including reasonable attorneys' fees. A service charge of the greater of one and one-half percent (1 ½%) per month or the maximum amount allowed by law will be charged on all past due balances commencing on the date payment is due.

4. Shipping Terms and Policies

Delivery shall be made in accordance with Seller's shipping policy in effect on the date of shipment. Product title and risk of loss will transfer to Buyer upon PCS tendering the Product for delivery to the carrier (F.O.B. Origin). If Buyer requests special shipping or handling, including expedited shipment, third-party billing, or freight collect, Buyer shall be responsible filing claims with the carrier and all freight and handling costs. Buyer shall pay for any special routing, packing, handling or insurance requested by Buyer and agreed to by PCS. Orders shipped under special routing instructions must be separately agreed upon and may be subject to additional charges. PCS will not be subject to requirements of non-compliance programs of Buyer, including charges for product delays, missing/inaccurate shipping documents, labeling or product markings.

Buyer shall promptly notify Seller, no later than 30 days from invoice date, of any claimed shortages or rejection as to any delivery, with the exception of deliveries that reveal external shipping damage, which, in some instances, must be refused immediately upon delivery by the carrier. Such notice shall be in writing and shall be reasonably detailed stating the grounds for any such rejection. Failure to provide any such notice within such time shall be deemed an acceptance in full of any such delivery. Seller shall not be liable for any shipment delays that affect Seller or any of Seller's suppliers, including but not limited to delays caused by unavailability or shortages of Products from Seller's suppliers, natural disasters, acts of war or terrorism, acts or omissions of Buyer, fire, strike, riot, or governmental interference, unavailability or shortage of materials, labor, fuel or power through normal commercial channels at customary and reasonable rates, failure or destruction of plant or equipment arising from any cause whatsoever, or transportation failures.

5. Back Orders

If, for any reason, an item on Buyer's order is temporarily out of stock, PCS will endeavor to back order that item for Buyer. Items on back order will be charged when the items are actually shipped, along with applicable taxes and shipping charges.

6. Return Policy – all sales final

All sales are final, except where otherwise agreed upon by Buyer and PCS. Should PCS, in its sole discretion, allow Buyer to return an item, the following return policy applies for that return:

- a. In order for PCS to approve any product return, the product must not be opened or damaged, and in its original undamaged packaging. PCS will not accept "open box" returns.
- b. As PCS sells specific project based manufactured and configured computers, accessories and electronic devices, unopened box returns also may be denied. We cannot re-sell or return a computer that has been built to a customer's specifications.
- c. Any and all product returns must be approved by PCS, in PCS's sole discretion, and a Return Merchandise Authorization ("RMA") number must be issued.
- d. Approved returns must be made within 30 days of the delivery date.
- e. Approved returns will incur a 25% restocking fee.
- f. Returns must be received within 15 days of the RMA number issuance.
- g. The customer is responsible for all insurance and shipping charges associated with the return.
- h. All returns must be sent via UPS, Federal Express, or any other courier that provides a tracking number and proof of delivery.
- i. If the returned product does not meet the requirements stated above, the product will be sent back to the customer "freight collect".
- j. Once PCS has approved a return, Buyer's refund will be issued within 7 days, and Buyer will receive an email confirmation that Buyer's return is completed. Please note that, depending on Buyer's financial institution, it may take an additional 2-10 business days for the credit to post to Buyer's account.

7. Errors

PCS attempts to be as accurate as possible. However, PCS does not warrant that all product descriptions, photographs, pricing, or other information provided is accurate, complete, current, or error-free. In addition, all weights and size dimensions are approximate. If a product offered by PCS is not as described or pictured, Buyer's sole remedy is to return it in an undamaged unused condition for a refund, subject to the return policy herein. In the event of an error in an order confirmation, in processing an order, in delivering a product, or otherwise, we reserve the right to correct such error and revise Buyer's order accordingly, or to cancel the order and refund any amount charged. Buyer's sole remedy in the event of an error is, subject to the return policy herein, to cancel Buyer's order and obtain a refund.

8. Disclaimer of Warranty

PCS PROVIDES NO WARRANTY TO ITS CUSTOMERS FOR ANY PRODUCTS SOLD. PCS HEREBY DISCLAIMS AND EXCLUDES ALL WARRANTIES, EXPRESS, STATUTORY, OR IMPLIED, INCLUDING BUT NOT LIMITED TO IMPLIED WARRANTIES OF MERCHANTABILITY, ACCEPTABILITY, SATISFACTORY QUALITY, NON-INFRINGEMENT, TITLE, FITNESS FOR A PARTICULAR PURPOSE, LOSS OF OR DAMAGE TO DATA, LACK OF VIRUSES OR FREE FROM VIRUS OR MALWARE ATTACK, SECURITY, PERFORMANCE, LACK OF NEGLIGENCE, WORKMANLIKE EFFORT, QUIET ENJOYMENT, THAT THE FUNCTIONS CONTAINED IN THE PRODUCT WILL MEET BUYER'S REQUIREMENTS, OR THAT DEFECTS IN THE PRODUCT WILL BE CORRECTED, OR THAT BUYER'S USE OF THE PRODUCT WILL GENERATE ACCURATE, RELIABLE, TIMELY RESULTS, INFORMATION, OR DATA. NO ORAL OR WRITTEN INFORMATION OR ADVICE GIVEN BY PCS, A DEALER, AGENT, OR AFFILIATE SHALL CREATE A WARRANTY. TO THE EXTENT WARRANTIES CANNOT BE DISCLAIMED OR EXCLUDED, THEY ARE LIMITED TO THE DURATION OF THE RELEVANT EXPRESS WARRANTY PERIOD.

TO THE MAXIMUM EXTENT PERMITTED BY APPLICABLE LAW, IN NO EVENT SHALL PCS, ITS AFFILIATES, DEALERS, AGENTS OR SUPPLIERS OR THEIR RESPECTIVE OFFICERS, DIRECTORS, EMPLOYEES, LICENSORS AND ASSIGNS BE LIABLE FOR ANY DIRECT, INDIRECT, EXEMPLARY, PUNITIVE, SPECIAL, INCIDENTAL OR CONSEQUENTIAL DAMAGES WHATSOEVER (INCLUDING BUT NOT LIMITED TO DAMAGES FOR LOSS OF PROFITS OR REVENUE, FOR BUSINESS INTERRUPTION, FOR PERSONAL INJURY, FOR LOSS OF PRIVACY, FOR LOSS OF ABILITY TO USE ANY THIRD PARTY PRODUCTS OR SERVICES, FOR FAILURE TO MEET ANY DUTY INCLUDING OF GOOD FAITH OR OF REASONABLE CARE, FOR NEGLIGENCE, AND FOR ANY OTHER PECUNIARY OR OTHER LOSS WHATSOEVER), REGARDLESS OF THE THEORY OF LIABILITY (CONTRACT, TORT OR OTHERWISE) ARISING OUT OF OR IN ANY WAY RELATED TO THE USE OF OR INABILITY TO USE THE PRODUCT, EVEN IF PCS OR SUCH OTHER ENTITIES HAVE BEEN ADVISED OF THE POSSIBILITY OF SUCH DAMAGES. IN NO EVENT SHALL THE TOTAL AGGREGATE LIABILITY OF PCS, ITS AFFILIATES, ASSOCIATES, DEALERS, AGENTS OR SUPPLIERS TO BUYER FOR ALL DAMAGES EXCEED THE PRICE BUYER PAID FOR THE PRODUCT. THIS LIMITATION IS CUMULATIVE AND WILL NOT BE INCREASED BY THE EXISTENCE OF MORE THAN ONE INCIDENT OR CLAIM. THE FOREGOING LIMITATIONS WILL APPLY EVEN IF ANY WARRANTY OR REMEDY PROVIDED FAILS OF ITS ESSENTIAL PURPOSE.

SOME JURISDICTIONS DO NOT ALLOW THE EXCLUSION OR LIMITATION OF IMPLIED WARRANTIES OR OF LIABILITY FOR INCIDENTAL OR CONSEQUENTIAL DAMAGES, SO THE FOREGOING LIMITATIONS MAY NOT APPLY TO BUYER.

IF ANY TERM IS HELD TO BE ILLEGAL OR UNENFORCEABLE, THE LEGALITY OR ENFORCEABILITY OF THE REMAINING TERMS SHALL NOT BE AFFECTED OR IMPAIRED.

9. Manufacturer's Warranty

Warranties may be available directly from select manufacturers. Manufacturer information is subject to change without notice. Not all manufacturers for products which we sell will offer manufacturers' warranties.

10. Privacy

Please refer to the PCS Privacy Statement, available at <https://PCS.com/privacy-policy>, for information about how PCS collects, uses, and discloses personal information from users of the site.

11. Dispute Resolution and Binding Arbitration

BUYER AND PCS AGREE TO GIVE UP ANY RIGHTS TO LITIGATE CLAIMS IN A COURT OR BEFORE A JURY, OR TO PARTICIPATE IN A CLASS ACTION OR REPRESENTATIVE ACTION WITH RESPECT TO A CLAIM. OTHER RIGHTS THAT BUYER WOULD HAVE IF BUYER WENT TO COURT MAY ALSO BE UNAVAILABLE OR MAY BE LIMITED IN ARBITRATION.

Any claim, dispute, or controversy, whether in contract, tort or otherwise, whether pre-existing, present, or future, and including statutory, consumer protection, common law, intentional tort, injunctive, and equitable claims, between Buyer and either PCS, its agents, employees, successors, assigns, direct and indirect subsidiaries, or any third party providing any products or services to Buyer in connection with Buyer's purchase arising from or relating in any way to Buyer's purchase of products, these Terms of Sale, their interpretation, or the breach, termination, or validity thereof, the relationships which result from these Terms of Sale (including relationships with third parties who are not signatories to these Terms of Sale), PCS's advertising, or any related purchase, shall be resolved exclusively and finally by binding arbitration. The arbitrator shall have exclusive authority to resolve any dispute relating to arbitrability and/or enforceability of this arbitration provision, including any unconscionability challenge or any other challenge that the arbitration provision of the Terms of Sale is void, voidable, or otherwise invalid. The arbitration shall be administered by the American Arbitration Association (AAA) or JAMS (or a substitute forum if both are unavailable). Arbitration proceedings shall be governed by this provision and the applicable procedures of

the selected arbitration administrator, including any applicable procedures for consumer-related disputes, in effect at the time the claim is filed. Notwithstanding the foregoing, Buyer may assert claims in a small claims court if Buyer's claims qualify. The Federal Arbitration Act and federal arbitration law apply to these Terms of Sale.

Buyer agrees to an arbitration on an individual basis. In any dispute, NEITHER BUYER NOR PCS SHALL BE ENTITLED TO JOIN OR CONSOLIDATE CLAIMS BY OR AGAINST OTHER CUSTOMERS, OR ARBITRATE OR OTHERWISE PARTICIPATE IN ANY CLAIM AS A CLASS REPRESENTATIVE, CLASS MEMBER, OR IN A PRIVATE ATTORNEY GENERAL CAPACITY. If any provision of this arbitration clause is found unenforceable, the unenforceable provision shall be severed and the remaining arbitration terms shall be enforced (but in no case shall there be a class arbitration).

The arbitrator shall be empowered to grant whatever relief would be available in court under law or in equity. Any award of the arbitrator(s) shall be final and binding on each of the parties and may be entered as a judgment in any court of competent jurisdiction. Information on AAA or JAMS and their applicable rules are available at the following numbers and URLs: American Arbitration Association, (800) 778-7879, www.adr.org; JAMS, (800) 352-5267, www.jamsadr.com.

12. Applicable Law and Jurisdiction

This Agreement will be governed by the substantive laws of the state of Arizona without giving effect to any choice of law rules. The United Nations Convention on Contracts for the International Sale of Goods will not apply to this Agreement. Buyer is responsible for compliance with local laws, if and to the extent local laws are applicable. Both parties to this Agreement specifically agree to submit to the exclusive jurisdiction of, and venue in, the courts in Maricopa County, Arizona in any dispute arising out of or relating to this Agreement.

13. Export Controls

Certain PCS products may be subject to export controls imposed by the United States of America, and may not be exported or re-exported: (a) into (or to a national or resident of) any country to which the United States of America has placed an embargo, including without limitation, Cuba, Iran, Iraq, Libya, North Korea, Syria, Sudan, or Venezuela; (b) to everyone on the U.S.

Treasury Department's Specially Designated Nationals list, or (c) the U.S. Commerce Department's Table of Denial Orders (collectively, the "Prohibited Countries"). By purchasing any PCS product, Buyer represents and warrants that Buyer is not located in any Prohibited Country, that Buyer is not under the control of any Prohibited Country, or that Buyer is not a national or resident of any Prohibited Country.

14. Severability

If any provision of these Terms of use shall be deemed unlawful, void, or for any reason unenforceable, then that provision shall be deemed severable from these Terms of Sale and shall not affect the validity and enforceability of any remaining provisions.

Agreed to by:

Printed Name: _____

Signature: _____

Title: _____

Date: _____

February 19, 2020

TO: Members of the Independent Special District Selection Committee

Subject: Nominations for one Regular and one Alternate Special District Member to Santa Barbara LAFCO

REVISED

CALL FOR NOMINATIONS FOR LAFCO REGULAR AND ALTERNATE SPECIAL DISTRICT MEMBER

This Revised Call for Nominations supplements the Notice sent to the Special Districts on February 10, 2020. Please note that the dates for submitting nominations remain the same as in the previous notice, in particular nominations must be received by LAFCO no later than March 27, 2020. The accompanying Nomination Forms have been updated to require that the forms be signed and dated.

The terms of Regular Special District member Craig Geyer, and Alternate Special District member Cynthia Allen, will expire on March 1, 2020. Both Commissioner Geyer and Alternate Commission Allen are interested in being re-elected. Government Code Section 56332(c) states that: *“At the end of the nominating period, if only one candidate is nominated for a vacant seat, that candidate shall be deemed appointed.”*

Nomination forms are attached to this notice.

- 1) **Nominations for the one LAFCO Regular and one Alternate Special District Member.** The terms of office of the Regular Special District Member and the Alternate Special District Member end on March 1, 2020. The terms of office shall be four years or until the appointment and qualification of his or her successor. The new terms of office end on March 1, 2024.
- 2) **Voting Requirements:** The independent special district selection committee consist of the presiding officer of the legislative body of each independent special district. If the presiding officer of an independent special district is unable to participate in an election, the legislative body of the district may appoint one of its members as an alternate to participate in the selection committee in the presiding officer's place.

- 3) **Nomination Period and Voting Period:** **The nomination period will end on March 27, 2020.** Following the nomination period, unless there is only one nominee for a seat, ballots containing the names of qualified nominees will be mailed to each eligible special district. The voting period will be up to 45 days. There are 38 special districts. For the election to be valid, at least 20 valid votes must be received. Election shall be by a majority of those voting, and not by plurality. In the event that a nominee does not receive a majority of votes cast, a runoff election shall be held between the two nominees receiving the highest number of votes.

Call for Nominations for one LAFCO Regular Special District Member and one Alternate Special District Member:

Nominations for one Regular Special District Member and one Alternate Special District Member should be submitted to the LAFCO Executive Officer, at the following address, faxed, or emailed **no later than 5:00 pm, Friday, March 27, 2020.** Nomination forms are attached to this notice.

Santa Barbara Local Agency Formation Commission
105 East Anapamu Street, Santa Barbara CA 93101
FAX 805/568-2249
Email Address: lafco@sblafco.org

Please contact the LAFCO office if you have any questions.

Sincerely,



PAUL HOOD
Executive Officer

**SANTA BARBARA
LOCAL AGENCY FORMATION COMMISSION**

| | |
|--|---|
| <p>NOMINATION FOR <u>REGULAR</u> SPECIAL DISTRICT MEMBER</p> <p><i>Return to:</i> Executive Officer Santa Barbara LAFCO 105 East Anapamu Street, Room 407 Santa Barbara CA 93101 Or FAX to 568-2249</p> | <p>LAFCO STAFF USE</p> <p>Date Received</p> |
| <p>Please print in ink or type</p> | |
| <p>POSITION SOUGHT: Regular Special District Member</p> | |
| <p>NAME OF NOMINEE: _____</p> <p>NOMINEE'S DISTRICT: _____</p> <p>MAILING ADDRESS:</p> <p>_____</p> <p>_____</p> <p>Phone: Bus. _____ Cell: _____</p> | |
| <p>SIGNATURE OF NOMINATOR:</p> <p>_____ Name of Independent Special District</p> <p>_____ Print Nominator's Name</p> <p>_____ Title</p> <p>_____ Signature</p> <p>_____ Date</p> | |
| <p>ADDITIONAL INFORMATION: On this form <u>or</u> an accompanying letter, describe the nominee's personal interests, qualifications, experience, education, volunteer activities or community organization memberships that may bear on the nomination for the Alternate Special District Member: This information will be distributed to all independent special districts.</p> | |

**SANTA BARBARA
LOCAL AGENCY FORMATION COMMISSION**

**NOMINATION FOR ALTERNATE SPECIAL
DISTRICT MEMBER**

Return to: Executive Officer
Santa Barbara LAFCO
105 East Anapamu Street, Room 407
Santa Barbara CA 93101
Or FAX to 568-2249

LAFCO STAFF USE

Date Received

Please print in ink or type

POSITION SOUGHT: Alternate Special District Member

NAME OF NOMINEE: _____

NOMINEE'S DISTRICT: _____

MAILING ADDRESS:

Phone: Bus. _____ Cell: _____

SIGNATURE OF NOMINATOR:

Name of Independent Special District

Print Nominator's Name

Title

Signature

Date

ADDITIONAL INFORMATION: On this form or an accompanying letter, describe the nominee's personal interests, qualifications, experience, education, volunteer activities or community organization memberships that may bear on the nomination for the Alternate Special District Member: This information will be distributed to all independent special districts.



February 27, 2020

Board of Directors
Santa Maria Public Airport District
3217 Terminal Drive
Santa Maria, CA 93455

Subject: Membership and Position on EconAlliance Board

Recommendation

It is recommended that the Board authorize the General Manager to join the Economic Alliance Foundation of Northern Santa Barbara County and serve on their Board of Directors.

Discussion

The Economic Alliance Foundation of Northern Santa Barbara County approached the District with a request that the District participate in their efforts to promote their key initiatives as shown on the attached brochure. The recommended participation would be through membership in the organization and participation by the General Manager as a member of their Board of Directors.

The impact to the District is estimated to be approximately \$2,500 - \$5,000 per year in addition to 3-5 hours of staff time per month from the General Manager.

Please see the brochure and let me know if you have any questions.

Sincerely

CHRIS HASTERT, CM
General Manager

THE ECONOMIC ALLIANCE FOUNDATION

info@EconAlliance.org

BOARD OF DIRECTORS:

Joe Halsell, President

CEO, Halsell Builders

Michael Sell, Vice President - Finance

Senior Vice President, Pacific Western Bank

Sam Cohen, Vice President - Governance & Operations

Government & Legal Specialist

Santa Ynez Band of Chumash Indians

Phil Adam, Vice President - Fund Development

Production Supervisor, Innovation Produce

Rick Rust, Secretary

Public Affairs Project Manager, Aera Energy LLC

Frankie Lindley, Treasurer

CFO, Coastal Vineyard Care Associates

Steve Pepe, Immediate Past President

Co-Founder, Clos Pepe Vineyards LLC

Ed Braxton, Director

Chief Human Resources Officer

Lompoc Valley Medical Center

Megan Cullen, Director

Principal, SYV Consulting

Maribel Aguilera Hernandez, Director

Attorney, Kirk & Simas

Mike Kirkwood, Director

Banking Professional

Patrice Mosby, Director

Vice President/Sr. Relationship Manager

Wells Fargo

Suzanne Singh, Director

Economic Development Director

Santa Maria Valley Chamber of Commerce

THE ECONOMIC ALLIANCE FOUNDATION

Northern Santa Barbara County

www.EconAlliance.org

INFORMATION:

Victoria Conner, Initiatives Director

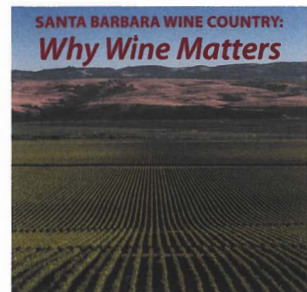
initiatives@EconAlliance.org

FOLLOW US ON:



SAMPLING OF EVENTS

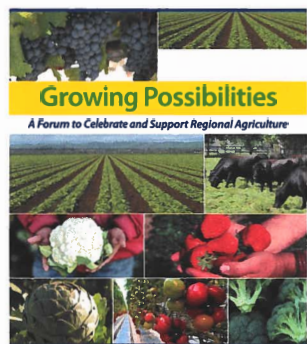
Wine Forum



Celebration of wine sector. Recognition of wine and tourism linkage to County economic vitality and quality of life. Discussion of strategies to keep wine industry thriving.

June 27, 2019

Growing Possibilities Ag Forum



Celebration of agriculture, top-notch speakers, ag sector update, issues/opportunities/innovation discussion, farm family recognition.

Next Event:
February 6, 2020

Energy Forum 2018



Provocative dialogue across public, private, economic sectors on energy's role in Santa Barbara County's well-being.

Annual Dinner and Future Forum Program



Highlight on innovation's importance and the trends/technologies driving economic vitality. High-profile keynotes and annual Innovation Award.



OVERVIEW

EconAlliance is a 501c3 nonprofit organization and cross-industry alliance that fosters industry sector awareness and appreciation in Northern Santa Barbara County. It promotes innovation and the development of head-of-household jobs, a highly-skilled workforce, and worker opportunity. Driving positive impact through advocacy, strategic initiatives, unique partnerships and creative programs, EconAlliance supports industry attraction, retention and expansion and champions the key Northern Santa Barbara County industry sectors that fuel local communities and inspire regional economic vitality.

KEY SUPPORTERS



PACIFIC PREMIER BANK



Rabobank



**Vitality, Visibility and Voice
for Northern Santa Barbara County
Industries and Communities**



Vision Statement: EconAlliance is a leader in promoting regional economic vitality.

Mission Statement: The mission of EconAlliance is to create a high-performance, globally competitive regional economy.

STRATEGIC NORTHERN SANTA BARBARA COUNTY INITIATIVES DRIVING ECONOMIC VITALITY

EconAlliance leads several initiatives in its effort to champion and celebrate target growth industries and provide foundational support for these industries and North County communities.

KEY INDUSTRY INITIATIVES

- Public Education
- Policymaker Education
- Workforce Development
- Other Support



AGRICULTURE



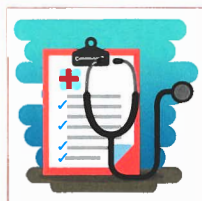
WINE/TOURISM



HIGH TECH/ADVANCED
MANUFACTURING



ENERGY



HEALTHCARE



SPACE ENTERPRISE

NORTH COUNTY SUPPORT INITIATIVES

- Surveys, Studies, Analysis
- Cross-sector Dialog and Information Sharing
- Collaborative Impact Efforts
- Thought Leadership



GLOBAL TRADE



INFRASTRUCTURE,
TRANSPORTATION,
LOGISTICS



INNOVATION AND
ENTREPRENEURSHIP



WORKFORCE AND
EDUCATION



DURT
(DELAYS, UNCERTAINTY,
REGULATIONS, TAXES)

SPECIAL PROJECTS/PARTNERS

EconAlliance is a frequent partner of others working to support the key industries and enhance the vitality and quality of life of Northern Santa Barbara County.



EconAlliance is designated by the Broadband Consortium Pacific Coast (BCPC) as the Consortium's Santa Barbara County liaison, supporting efforts to enhance community broadband options, planning and coordination across the tri-counties. Offering a

special understanding of North County, the Consortium's current target area of Santa Barbara County, EconAlliance partners with the Consortium to coordinate North County broadband forums, policymaker briefings and cross-sector conversations. Broadband is a key element of the EconAlliance infrastructure initiative.

District Export Councils across the United States assist the U.S. Department of Commerce in promoting export and supporting exporters. EconAlliance and the District Export Council of Southern California (DECSC) partner to bring trade expertise and global market analysis to Northern Santa Barbara County exporters and potential exporters under the EconAlliance Global Trade Initiative.



EconAlliance is committed to leveraging assets, resources and talent to support regional economic vitality. It collaborates with local Chambers, economic development entities, and industry associations, as well as regional partners such as the Hourglass Project and others working to support North County and regional industries, communities and workers.



Working with over 20 industry partners, school districts, affordable housing, youth programs, local nonprofits and service organizations, EconAlliance annually brings science, technology, engineering and math (STEM) career awareness and industry-led STEM workshops and tours to Santa Maria low-income and other students. Beginning in 2019, youth in Lompoc and Santa Ynez Valley will also be served. Special thanks to event sponsors Aera Energy, Santa Ynez Band of Chumash, local Rotary and Kiwanis Clubs, the Solvang Chamber of Commerce, industry workshop/tour partners, and all STEM INDUSTRY DAYS supporters who annually bring the STEM message to over 300 North County youth.

STEM INDUSTRY DAYS features three days of industry-led workshops in Santa Maria (5th/6th graders, junior high, high school), and, new this year, one day of workshops in Lompoc. Also new this year, one day of STEAM workshops in Santa Ynez Valley, in cooperation with the Solvang Chamber of Commerce.

The Workforce & Literacy Initiative (WALI), developed by EconAlliance, United Way and Allan Hancock College, is co-led by EconAlliance and United Way NSBC. It features five regional workforce and literacy goals for 2020.



The annual Summer Science Institute (SSI), under Director/award-winning science teacher Riccardo Magni, prepares students to compete in the Santa Barbara County Science Fair and for the future, as they organize and complete an independent science research project. EconAlliance serves as 501c3 fiscal agent, promoting industry partnerships and support for the program.



Gentlemen of the Board

19 Feb 2020

I had a dream.

A dream to fly a supersonic MiG 21 in a Santa Maria air show and provide training support to the Department of Defense.

The MiG 21 was listed as one of the most important of the world's top 10 aircraft by "Flying" magazine.

The MiG 21, produced in very large numbers, was a shock and major game changer in the way the Defense Department developed our competing aircraft.

For many years the Russian MiG 21 established the world records for speed and altitude in competition with the US.

The MiG 21 is still used in combat today and was recently credited with shooting down an F 16.

As a result of my failure to negotiate a doable settlement with the assets I have,I am done.

In response to this offer, I will transfer the title to N21PF to the airport and trust that you will take the judgement handcuffs off that have prevented me from earning the money to fully pay the original note, that was signed in good faith.

With no anger or malice towards anyone, just sadness, the dream of the amazing, historical aircraft I hoped to demonstrate and fly here in Santa Maria while acquiring more of them to support our national defense,.....
.....is over.

I have nothing else to offer.

At 77, I am fortunate to have a beautiful memory of a flying a MiG 21, supersonic, over the Moscow countryside, doing a roll and a loop as symbolic of the United States win over the “Scientific Socialist Republic” of the USSR. The Soviets built walls, with guns, pointed inwards, to keep their subjects in “The Workers’ Paradise.”

With the hope of a better future for the citizens of both countries.

David E. Baskett