

## RESOLUTION 910

### RESOLUTION OF THE BOARD OF DIRECTORS OF THE SANTA MARIA PUBLIC AIRPORT DISTRICT AMENDING ORDINANCE TO ADOPT NEW DISTRICT VOTING AREA MAPS

WHEREAS, the Santa Maria Public Airport District (the “District”) supports the full participation of all residents in electing members of the District’s Board of Directors;

WHEREAS, the District adopted Resolution No. 871 which established an ordinance and provided for the election of the Board of Directors of the Santa Maria Public Airport District by-district in five (5) single member districts on February 14, 2019;

WHEREAS, following the publication of 2020 U.S. Census data, the District is required to adjust the boundaries of by-district voting areas, as far as practical, equal in population and in compliance with various statutes;

WHEREAS, the services of Cooperative Strategies, LLP were engaged to provide feedback and guidance related to the 2020 U.S. Census data and adjusting the by-district voting areas;

WHEREAS, draft maps were posted on the District’s website and public meetings were held on October 14, 2021, January 27, 2022 and March 10, 2022 to solicit feedback regarding the draft maps and to select the new by-district voting areas map;

WHEREAS, the purpose of this resolution is to amend the ordinance to adopt the new voting area map, reflecting 2020 U.S. Census data, as reflected in Exhibit A attached hereto and incorporated herein by this reference;

NOW, THEREFORE, the Board of Directors of the Santa Maria Public Airport District does ordain as follows:

SECTION 1. The above recitals are true and correct and are incorporated herein by this reference.

SECTION 2. Each Board member shall be elected on a by-district basis in the district’s described in the map contained in Exhibit A attached hereto and incorporated herein by this reference.

SECTION 3. The Board of Directors find that this proposed amendment to the ordinance is exempt from the requirements of the California Environmental Quality Act pursuant to Title 14 of the California Code of Regulations, Section 15061(b)(3) in that it is not a project which has the potential for causing a significant effect on the environment.

SECTION 4. If any part or provision of this chapter, or the application thereof to any person or circumstance, is held invalid, the remainder of the chapter, including the application of that part or provision to other persons or circumstances, shall not be affected thereby and shall continue in full force and effect. To this end, the provisions of this ordinance are severable.

SECTION 6. To the extent the terms and provisions of this ordinance may be inconsistent or in conflict with the terms or conditions of any prior ordinance, motion, resolution, rule or regulation governing the same subject, the terms of this ordinance shall prevail with respect to the subject matter thereof.

INTRODUCED on March 24, 2022. PASSED AND ADOPTED as an ordinance of the Santa Maria Public Airport District at a regular meeting of said District on the 14th day of April, by the following roll call vote:

PRESIDENT ENGEL: YES

DIRECTOR ADAMS: YES

VICE-PRESIDENT BROWN: YES

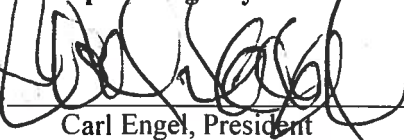
DIRECTOR BASKETT: YES

DIRECTOR RAFFERTY: YES

**Approved as to content for District:**


  
Chris Hastert, General Manager

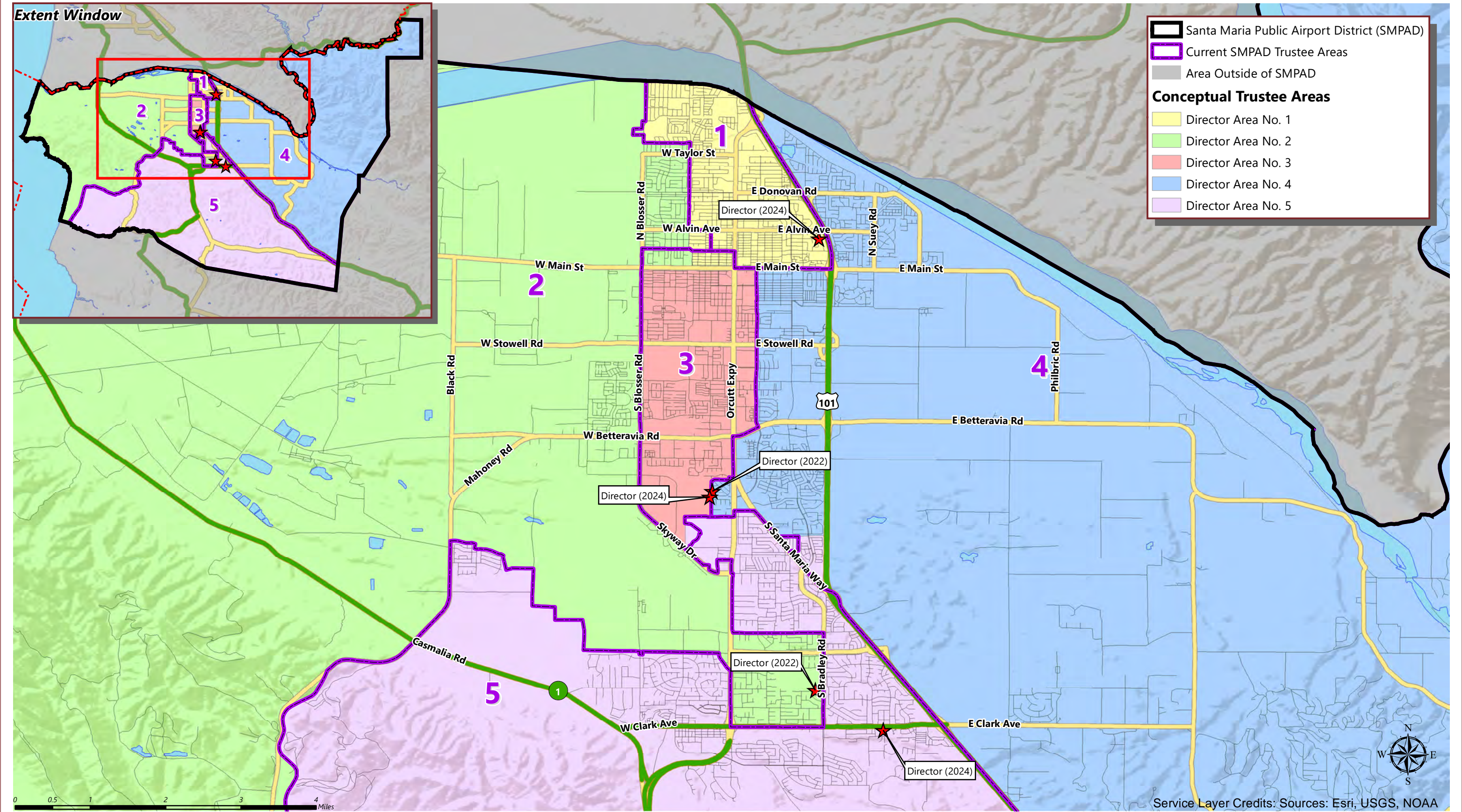
**SANTA MARIA PUBLIC AIRPORT DISTRICT,  
a public agency**

By:   
Carl Engel, President

**Approved as to form for District:**

  
District Counsel

By:   
Hugh Rafferty, Secretary



**SANTA MARIA PUBLIC AIRPORT DISTRICT**

CONCEPTUAL DIRECTOR AREAS - SCENARIO 2

<b>Total Population:</b>	<b>156,584</b>	<b>Ideal Population:</b>	<b>31,317</b>	<b>Variance:</b>	<b>3.5%</b>
--------------------------	----------------	--------------------------	---------------	------------------	-------------

<b>Total Population (2020 Census)</b>					
	<b>Director Area 1</b>	<b>Director Area 2</b>	<b>Director Area 3</b>	<b>Director Area 4</b>	<b>Director Area 5</b>
Population	31,790	31,816	30,890	31,357	30,731
Population Variance	473	499	-427	40	-586
	1.5%	1.6%	-1.4%	0.1%	-1.9%
Hispanic/Latino	81.1%	76.3%	83.6%	59.4%	37.3%
White	12.3%	15.9%	10.3%	29.0%	52.4%
Black/ African American	0.9%	0.9%	0.7%	1.2%	1.0%
American Indian/ Alaska Native	0.2%	0.3%	0.4%	0.4%	0.6%
Asian	3.8%	4.3%	3.1%	5.9%	3.3%
Native Hawaiian/ Other Pacific Islander	0.0%	0.1%	0.0%	0.2%	0.1%
Other	0.3%	0.3%	0.4%	0.8%	0.4%
Two or More Races	1.3%	2.0%	1.4%	3.1%	4.9%

<b>Population 18 and Over (2020 Census)</b>					
	<b>Director Area 1</b>	<b>Director Area 2</b>	<b>Director Area 3</b>	<b>Director Area 4</b>	<b>Director Area 5</b>
Population	22,002	22,570	20,338	23,483	23,536
Hispanic/Latino	76.5%	72.5%	79.3%	53.8%	32.6%
White	15.8%	18.9%	13.5%	33.9%	57.1%
Black/ African American	1.1%	1.0%	1.0%	1.4%	1.1%
American Indian/ Alaska Native	0.3%	0.3%	0.4%	0.5%	0.6%
Asian	4.5%	5.1%	3.9%	6.6%	3.7%
Native Hawaiian/ Other Pacific Islander	0.1%	0.1%	0.0%	0.2%	0.1%
Other	0.4%	0.3%	0.3%	0.7%	0.5%
Two or More Races	1.4%	1.8%	1.5%	2.9%	4.4%

<b>Citizens by Voting Age Population Estimate (2015-2019)</b>					
	<b>Director Area 1</b>	<b>Director Area 2</b>	<b>Director Area 3</b>	<b>Director Area 4</b>	<b>Director Area 5</b>
Population	12,494	13,738	9,400	18,997	22,501
Hispanic/Latino	63.4%	60.4%	61.9%	42.9%	26.3%
White	27.2%	30.4%	28.1%	45.4%	64.9%
Black/ African American	1.3%	2.7%	1.9%	2.7%	1.1%
American Indian/ Alaska Native	0.1%	0.5%	0.5%	0.4%	0.7%
Asian	7.5%	5.5%	5.7%	6.4%	3.4%
Native Hawaiian/ Other Pacific Islander	0.0%	0.0%	0.0%	0.0%	0.2%
Other	N/A	N/A	N/A	N/A	N/A
Two or More Races	0.6%	0.6%	1.9%	2.3%	3.4%