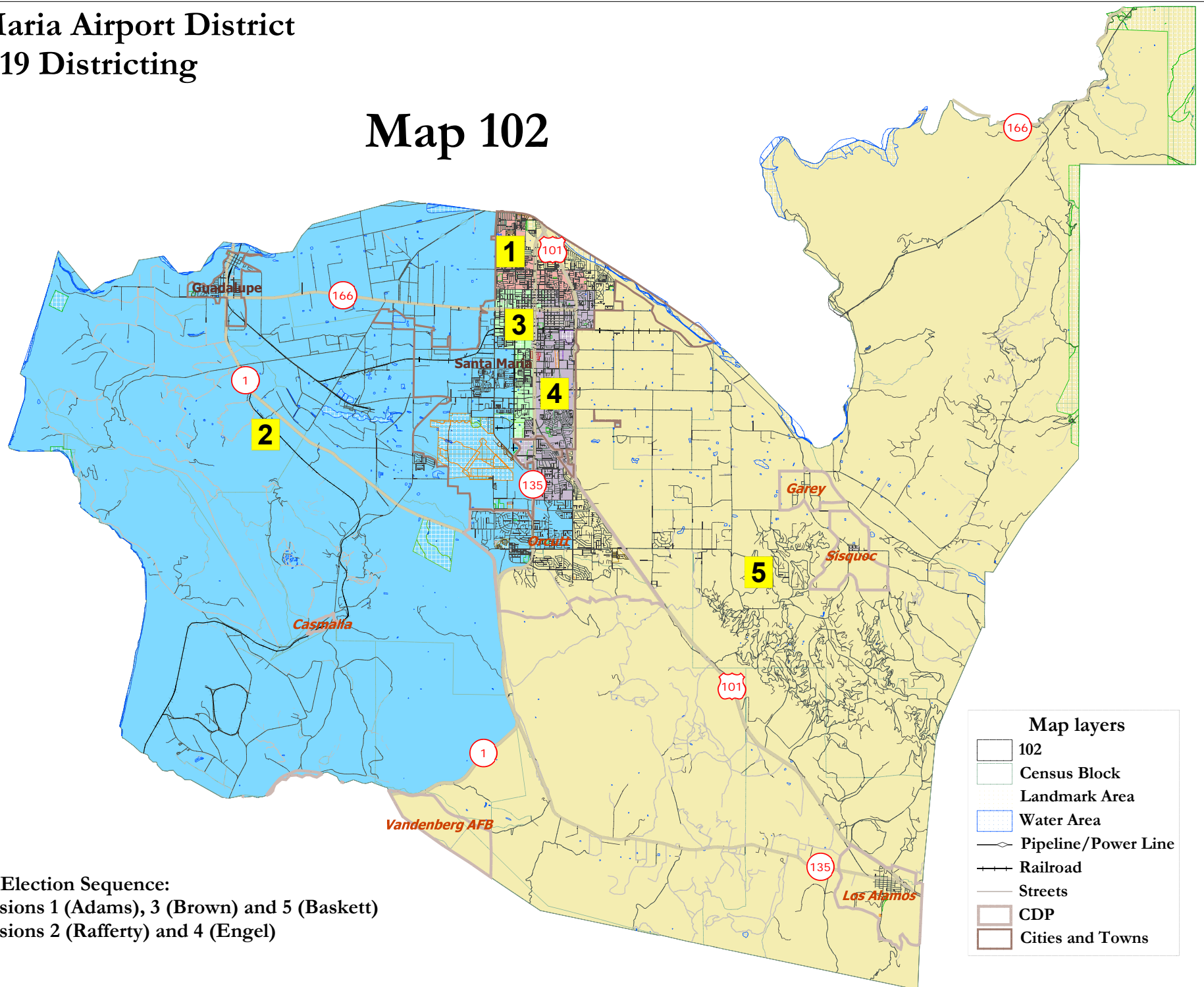


Santa Maria Airport District 2018/2019 Districting

Map 102

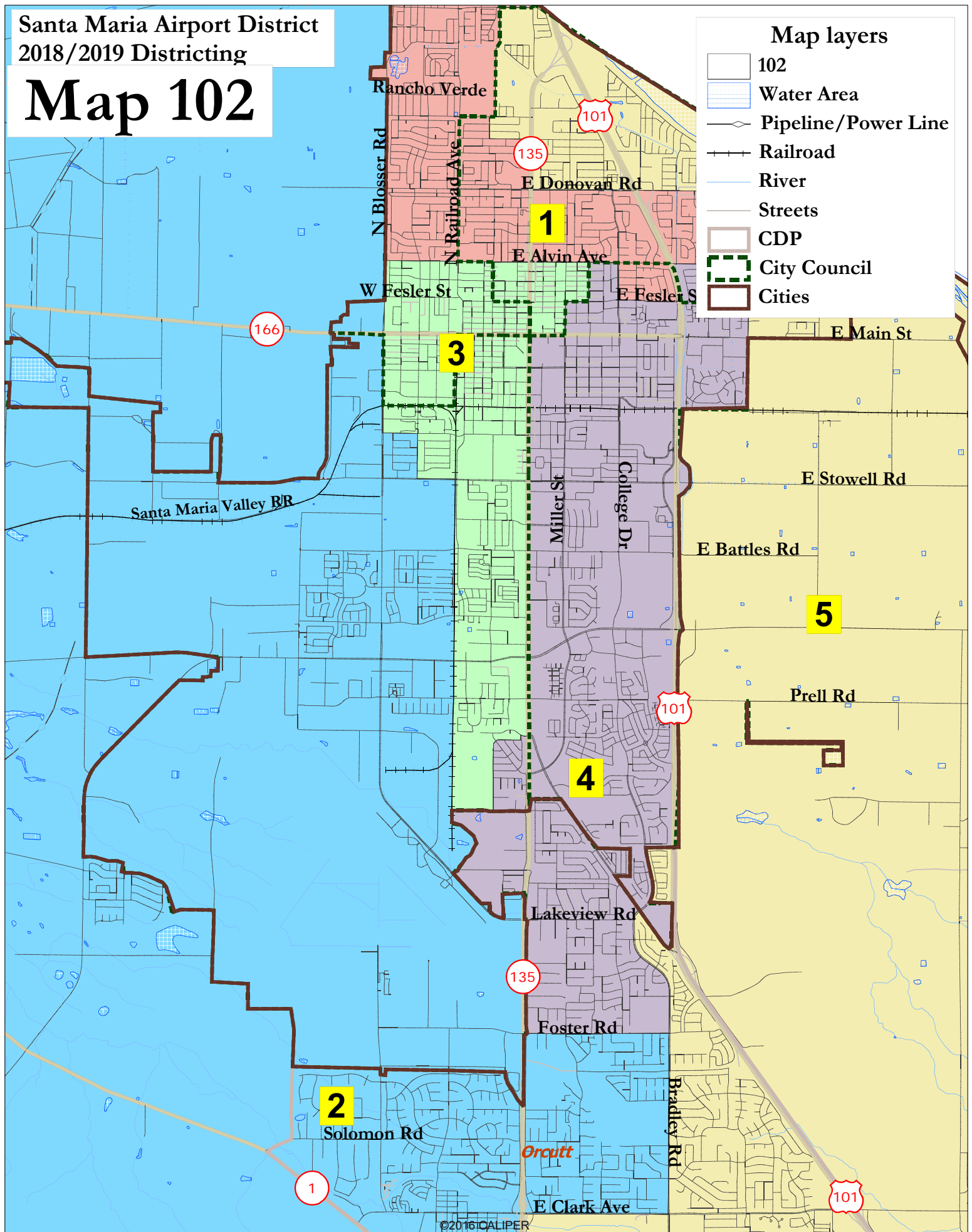


Proposed Election Sequence:

2020: Divisions 1 (Adams), 3 (Brown) and 5 (Baskett)

2022: Divisions 2 (Rafferty) and 4 (Engel)

Map 102



Santa Maria Airport District - Map 102							
District		1	2	3	4	5	Total
<u>Ideal</u>	Total Pop	29,138	28,394	28,761	28,564	27,912	142,769
28,554	Deviation from ideal	584	-160	207	10	-642	1,226
	% Deviation	2.05%	-0.56%	0.72%	0.04%	-2.25%	4.29%
Total Pop	% Hisp	76%	56%	85%	44%	41%	61%
	% NH White	16%	36%	10%	46%	51%	32%
	% NH Black	1%	2%	1%	2%	1%	1%
	% Asian-American	5%	5%	3%	6%	5%	5%
Citizen Voting Age Pop	Total	13,033	16,312	7,763	19,412	18,747	75,267
	% Hisp	58%	42%	63%	37%	29%	43%
	% NH White	32%	50%	28%	53%	62%	48%
	% NH Black	1%	2%	2%	2%	2%	2%
	% Asian/Pac.Isl.	8%	5%	6%	6%	5%	6%
Voter Registration (Nov 2016)	Total	9,080	13,010	5,352	14,222	15,578	57,242
	% Latino est.	69%	42%	67%	38%	31%	45%
	% Spanish-Surnamed	62%	38%	60%	34%	28%	40%
	% Asian-Surnamed	1%	2%	1%	2%	2%	1%
	% Filipino-Surnamed	3%	2%	3%	2%	2%	2%
	% NH White est.	25%	52%	25%	55%	64%	49%
	% NH Black	1%	2%	1%	2%	2%	1%
Voter Turnout (Nov 2016)	Total	6,256	10,252	3,663	10,947	12,651	43,769
	% Latino est.	65%	38%	63%	34%	27%	40%
	% Spanish-Surnamed	58%	34%	56%	31%	24%	36%
	% Asian-Surnamed	1%	2%	1%	2%	2%	1%
	% Filipino-Surnamed	3%	2%	3%	2%	2%	2%
	% NH White est.	30%	56%	30%	59%	67%	54%
	% NH Black	1%	2%	1%	2%	2%	2%
Voter Turnout (Nov 2014)	Total	3,703	7,000	2,028	7,206	8,667	28,604
	% Latino est.	51%	28%	51%	24%	19%	29%
	% Spanish-Surnamed	46%	25%	46%	22%	17%	26%
	% Asian-Surnamed	1%	2%	1%	1%	1%	1%
	% Filipino-Surnamed	3%	2%	3%	2%	1%	2%
	% NH White est.	43%	67%	40%	70%	76%	65%
	% NH Black est.	1%	2%	2%	2%	2%	2%
ACS Pop. Est.	Total	28,962	30,267	30,064	30,715	28,954	148,963
Age	age0-19	34%	33%	41%	28%	27%	33%
	age20-60	52%	50%	51%	53%	52%	51%
	age60plus	15%	17%	8%	18%	22%	16%
Immigration	immigrants	39%	25%	44%	20%	19%	29%
	naturalized	30%	31%	13%	38%	44%	28%
Language spoken at home	english	29%	52%	20%	61%	68%	46%
	spanish	65%	44%	75%	33%	27%	48%
	asian-lang	5%	3%	2%	4%	3%	4%
	other lang	2%	1%	2%	2%	2%	2%
Language Fluency	Speaks Eng. "Less than Very Well"	38%	23%	47%	19%	14%	28%
Education (among those age 25+)	hs-grad	47%	52%	31%	58%	59%	51%
	bachelor	6%	13%	5%	15%	14%	11%
	graduatedegree	3%	7%	2%	7%	8%	5%
Child in Household	child-under18	43%	41%	55%	33%	34%	40%
Pct of Pop. Age 16+	employed	60%	58%	63%	59%	60%	60%
Household Income	income 0-25k	20%	15%	26%	20%	10%	18%
	income 25-50k	29%	26%	33%	23%	21%	26%
	income 50-75k	18%	18%	19%	20%	19%	19%
	income 75-200k	32%	36%	21%	34%	45%	34%
	income 200k-plus	1%	5%	1%	3%	6%	3%
Housing Stats	single family	88%	79%	51%	73%	93%	78%
	multi-family	12%	21%	49%	27%	7%	22%
	rented	38%	40%	71%	43%	25%	42%
	owned	62%	60%	29%	57%	75%	58%
Total population data from the 2010 Decennial Census.							
Surname-based Voter Registration and Turnout data from the California Statewide Database.							
Latino voter registration and turnout data are Spanish-surname counts adjusted using Census Population Department undercount estimates. NH White and NH Black registration and turnout counts estimated by NDC. Citizen Voting Age Pop., Age, Immigration, and other demographics from the 2012-2016 American Community Survey and Special Tabulation 5-year data.							